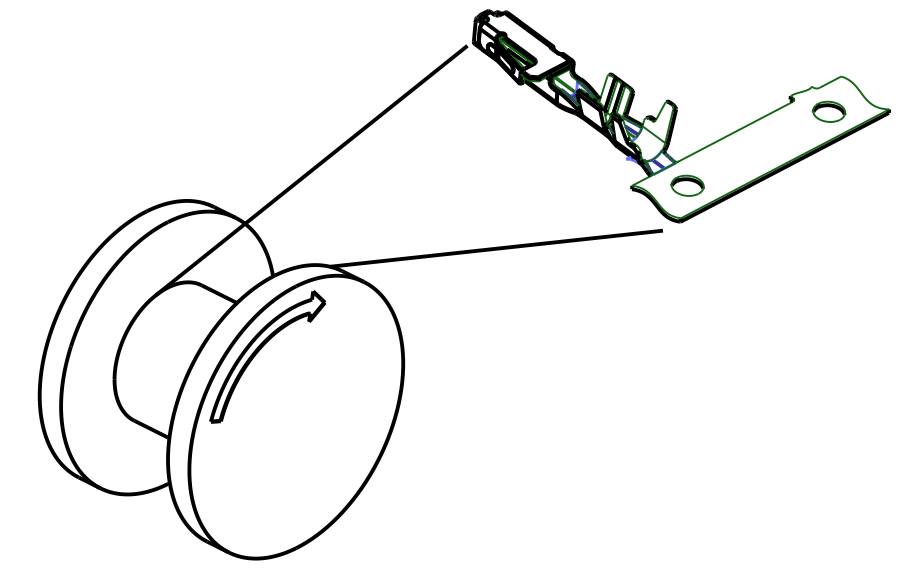
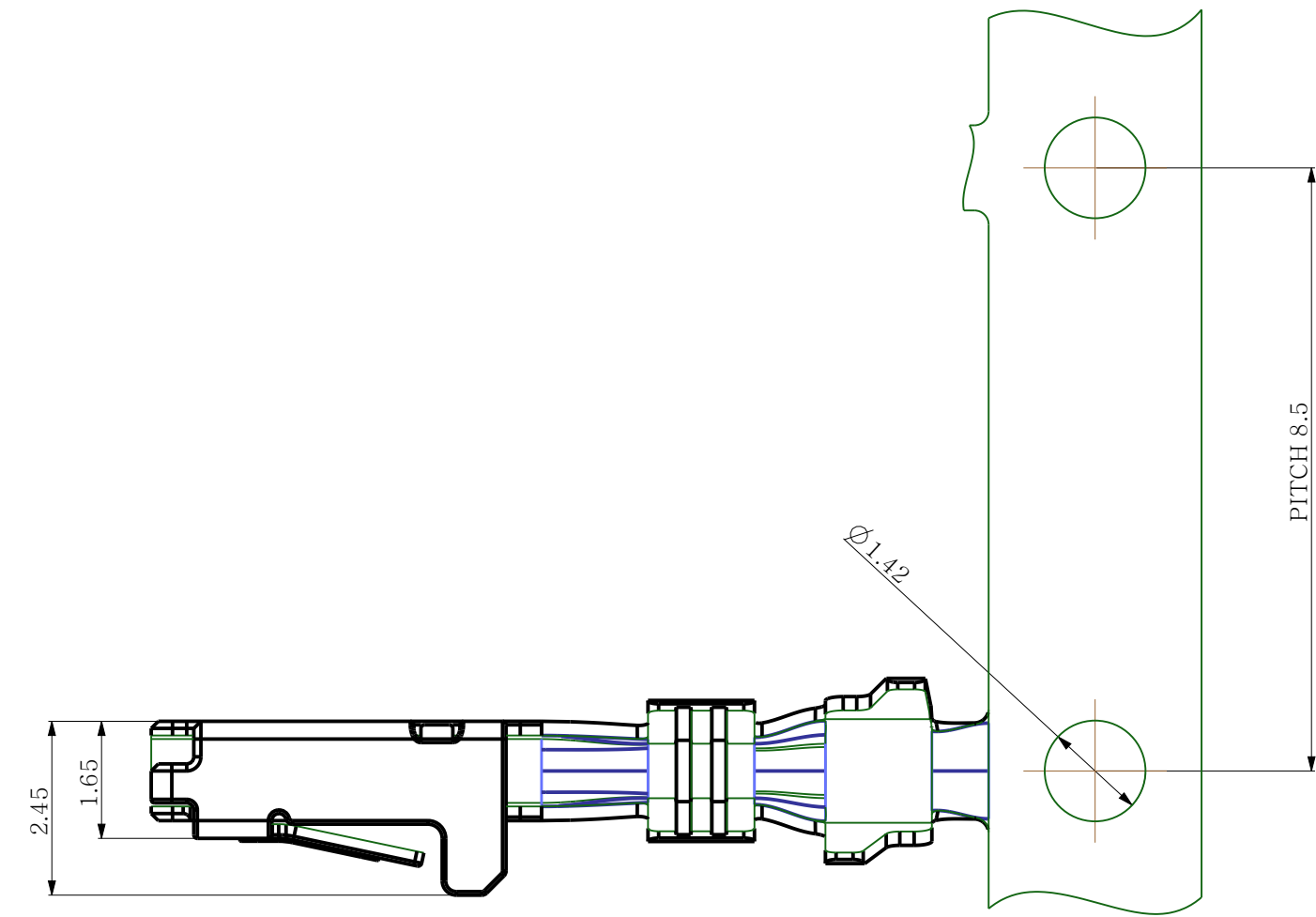
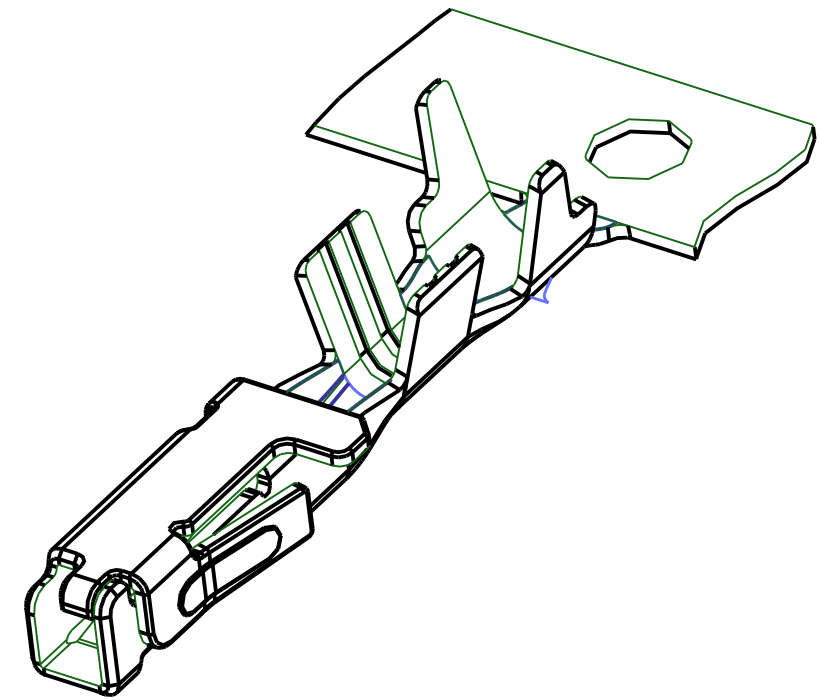
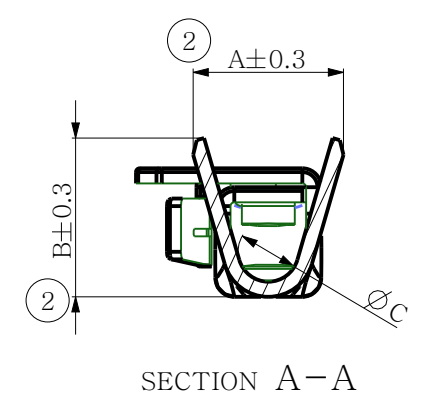
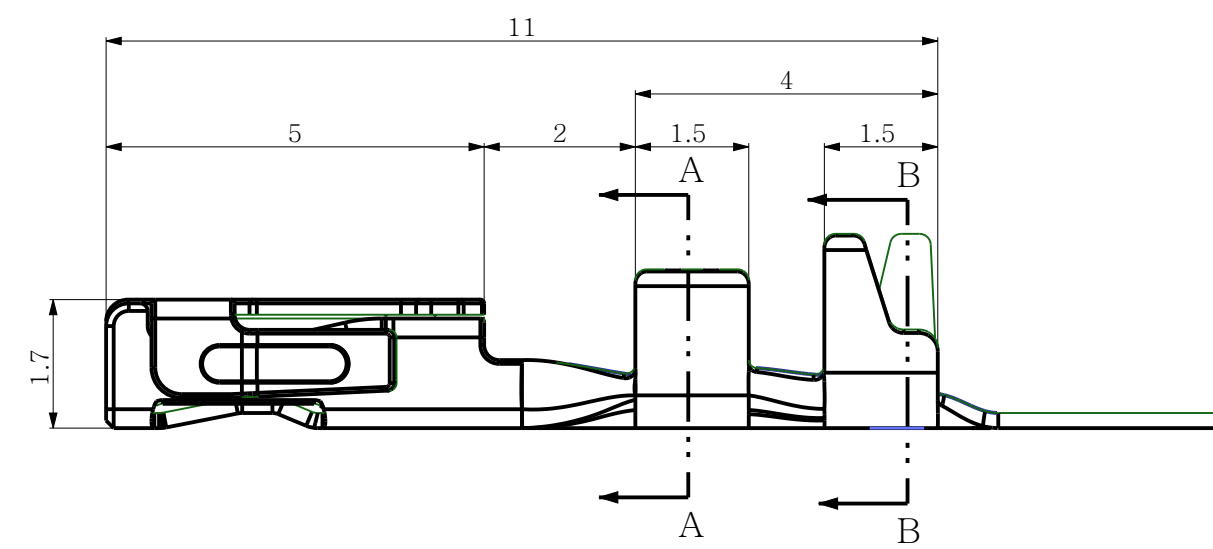
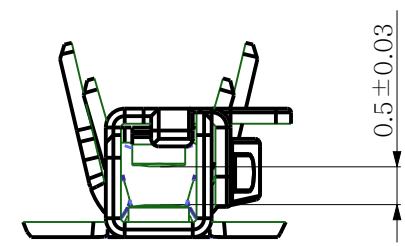


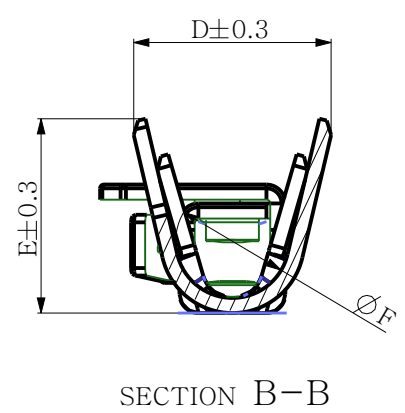
REV	REVISION RECORD	DATE	DRWN	APVD
1	ENGINEERING CONTROLLED	13DEC'19	SH	MJ
2	REVISED(RD-2019-038)	12MAR'19	SH	CY



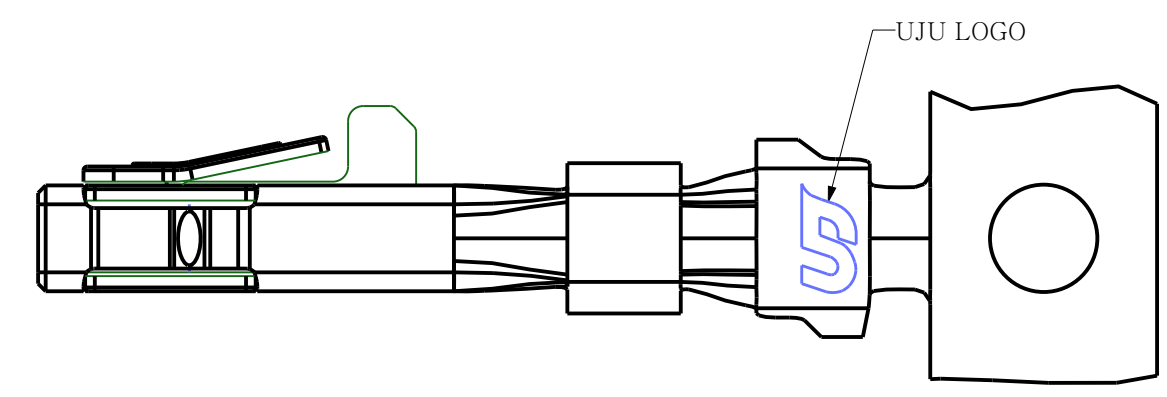
UNWINDING DIRECTION ON THE TOP OF REEL



SECTION A-A



SECTION B-B



- NOTES:
- GENERAL TOLERANCE: ± 0.2 , ANGLE $\pm 3^\circ$
 - Δ 0.8um Min. TIN PLATED (REFLOW)
 - NO CABLE SEAL APPLICATIONS
 - MATING TAB THICKNESS: 0.64MM

REV	PART NO.	WIRE RANGE	A	B	C	D	E	F	STRIP LENGTH	CCW ± 0.05	CCH ± 0.03	ICW ± 0.1	ICH
2	KH1800045-21	0.5	2.3	2.0	0.8	2.6	2.6	1.6	2.6 ± 0.1	1.4	0.87	2.0	1.7 MAX
2		0.35							2.6 ± 0.1	1.4	0.77	1.9	1.7 MAX
2		0.3							2.6 ± 0.1	1.4	0.77	1.9	1.7 MAX

TOLERANCES UNLESS OTHERWISE SPECIFIED	UNIT	THIRD ANGLE PROJECTION
	MM	
0		
0.0		
0.00		
0.000		
0.0000		
ANGLES		
PRODUCT SPEC	APPLICATION SPEC	

DRWN	SH LEE	(주)우주일렉트로닉스 UJU Electronics co.,Ltd.			
CHKD	SH LEE				
APVD	CY CHOI				
NAME		025(0.64MM) D FEMALE TERMINAL			
MATERIAL					
COPPER ALLOY		CUSTOMER DRAWING NO			
FINISH/COLOR					
PRE-TIN		KH1800045			
WEIGHT					
LOC	RESTRICTED TO	SIZE	SCALE	SHEET	REV
		A2	10:1	1 OF 1	2