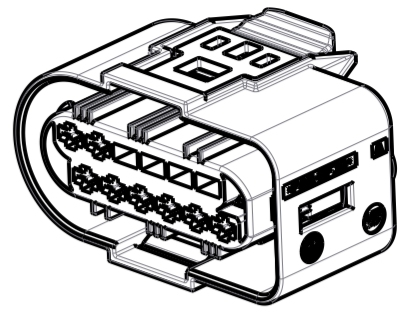
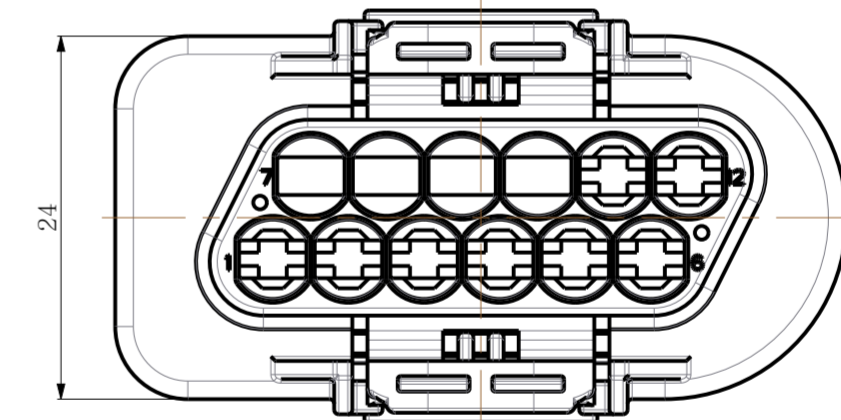
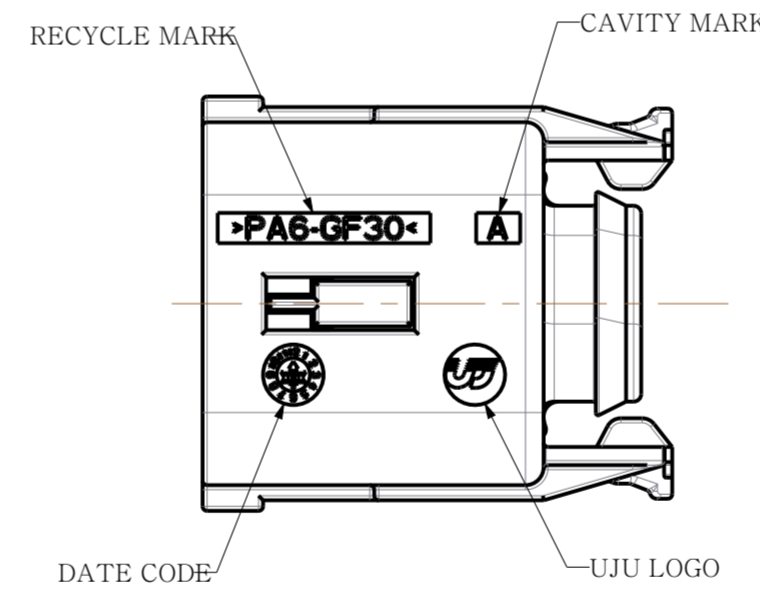
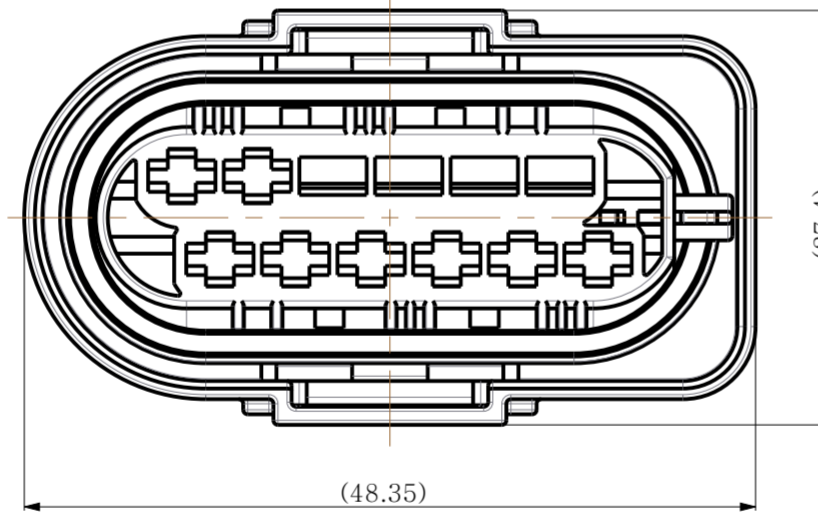
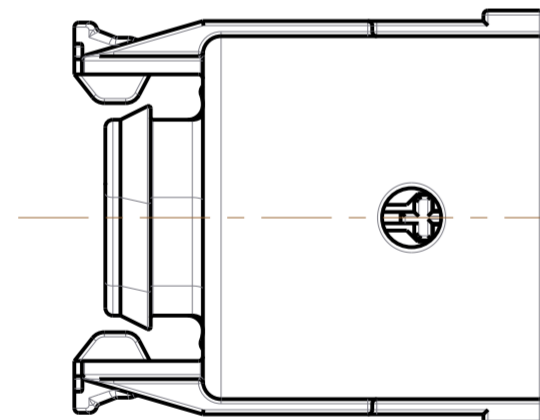
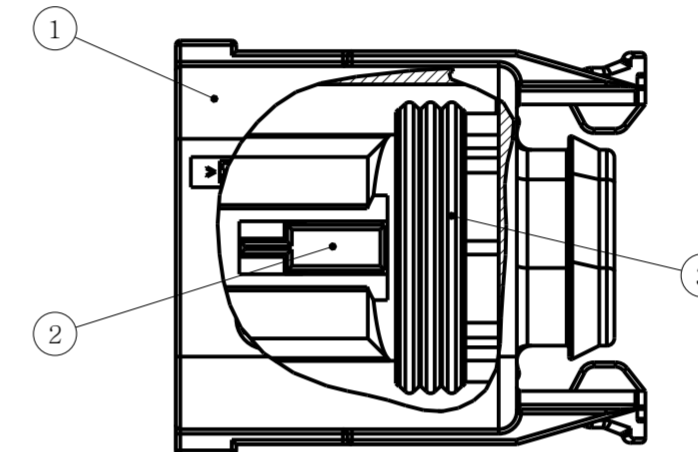
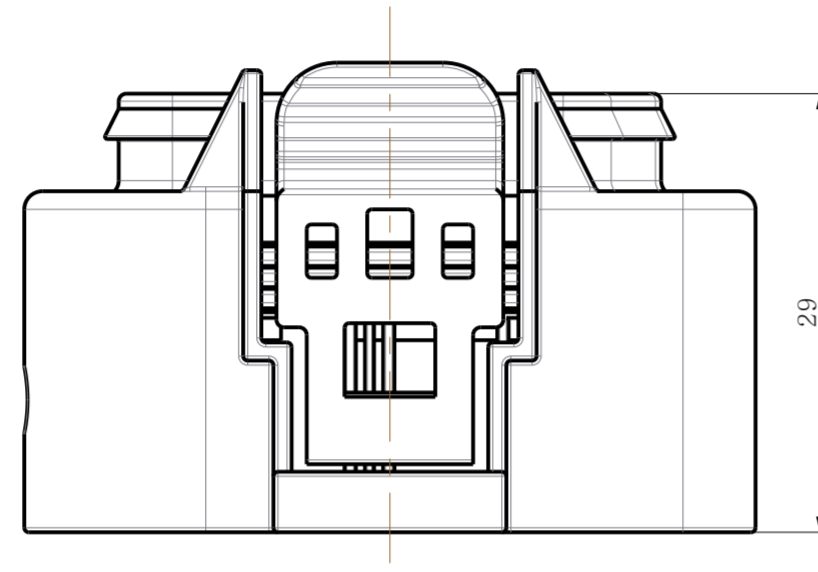
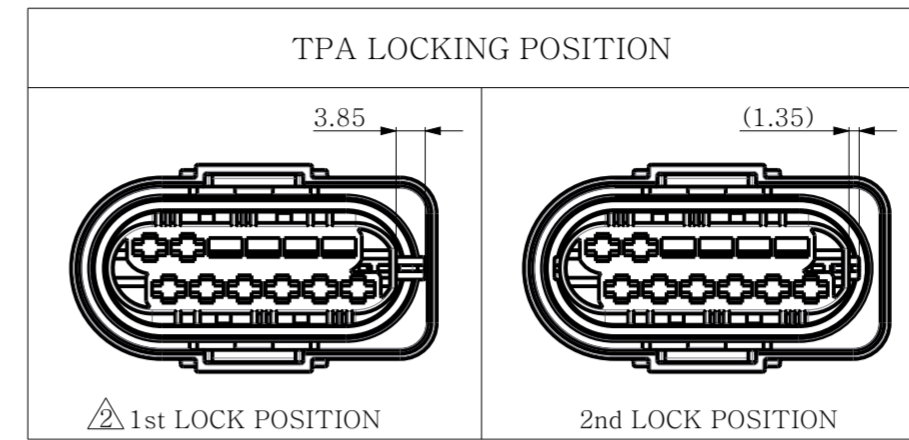


REV	REVISION RECORD	DATE	DRWN	APVD
C	REVISED	10JAN'13	CH	KY
D	REVISED	15OCT'13	CH	SJ



ISOMETRIC VIEW



<TABLE 1>

CONTACT	KOSTAL .110 SERIES CONTACT		
P/N	2 21 24 49206 0	2 21 24 49025 0	2 21 24 49207 0
WIRE SIZE (mm ²)	0.35~0.5	0.75	2.5

<TABLE 2>

KOSTAL SINGLE WIRE SEAL		
P/N	1 08 00 44452 2	1 08 00 44452 3
WIRE SIZE (mm ²)	0.35~0.75	2.5

NOTE
 1.GENERAL TOLERANCE:±0.3, ±3°
 2.DELIVERY CONDITION:TPA FIRST LOCK POSITION
 3.APPLICABLE RECEPTACLE:<TABLE 1>
 4.APPLICABLE SINGLE WIRE SEAL:<TABLE 2>

NO	DESCRIPTION	MATERIAL	COLOR	Q'TY	ASSY P/N	REV
3	110 SLD 12F Inner Seal	SILICONE	YELLOW	1	KH2100002-30	A
2	110 SLD 12F TPA HSG	PA66-GF50	NATURAL	1	KH2100002-20	B
1	110 SLD 12F HSG	PA6-GF30	GRAY	1		
			BLACK	-		

DRWN CH.PARK	UNIT MM	THIRD ANGLE PROJECTION	(주)우주일렉트로닉스 UJU Electronics co.,Ltd.			
CHKD KW.AHN						
APVD KY.KANG	MATERIAL		NAME			
SEE TABLE	FINISH/COLOR		110 SLD 12F ASSY			
SEE TABLE	WEIGHT		DRAWING NO			
-	-		KH2100002			
LOC	RESTRICTED TO	SIZE	SCALE	SHEET	REV	
-	-	A2	2/1	1	역	D