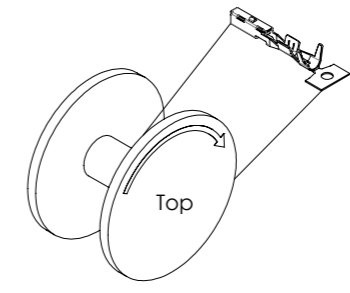
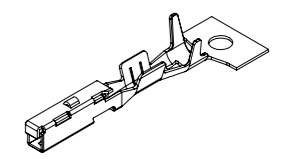


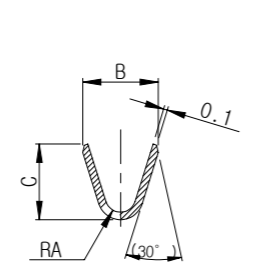
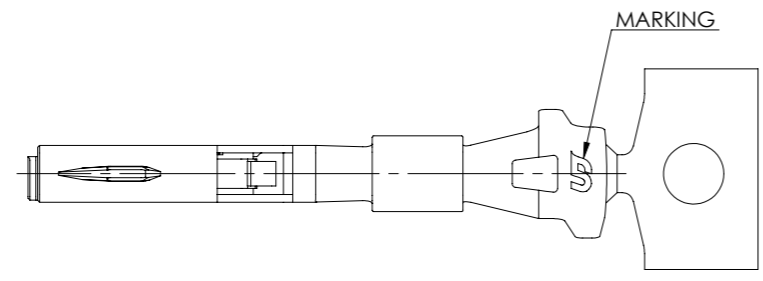
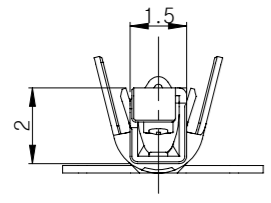
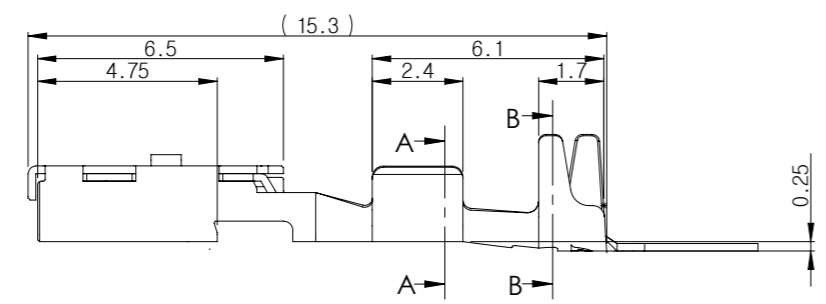
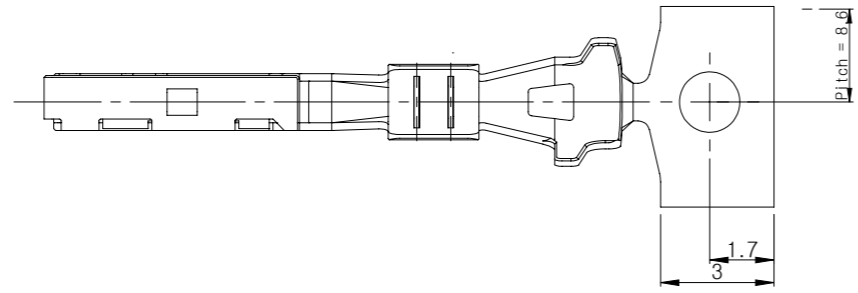
REV	REVISION RECORD	DATE	DRWN	CHKD	APVD
A	ENGINEERING RELEASED (RD-2022-070)	01 JUL '22	JH	KH	CY



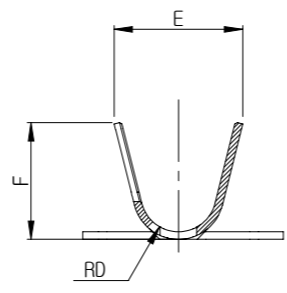
Unwinding direction off top of reel



3D View



SECTION A-A



SECTION B-B

-Note-

1. Material : Copper Alloy (T=0.2)
2. General Tolerance : See below
3. Finish (Tin) : Pre-Tin 0.8~1.5µm over Copper 0.05~0.15µm Min.
4. No burr permitted, round outer edge : R0.05 Max.
5. Remove Burrs, Break sharp edges
6. No Crack
7. Barrel swage edges without burrs
8. Insertion force (Only first piece inspection) : 250~350gf
9. Application Wire Seal

Applicable wire(SQ)	Description	Part No.
AESSXF 0.22SQ	025_SLD_Wire Seal_S	KD0000002
AESSXF 0.3SQ	025_SLD_Wire Seal_M	KD0000004
AESSXF 0.5SQ	025_SLD_Wire Seal_L	KD0000005
CLOSED SEAL	025_SLD_Dummy Seal	KD0000003

TOLERANCE								
10MAX	30MAX	50MAX	70MAX	100MAX	120MAX	250MAX	250VR	ANGLE
±0.15	±0.20	±0.30	±0.40	±0.50	±0.75	±0.9	±1.4	±0.5도

3.1	3.7	1.0	2.1	2.0	0.4	0.3~0.5SQ	Ø1.4~1.7	025_SLD_F_TML_M	KH2000034-21	Tin
3.1	3.7	1.0	1.6	1.5	0.4	0.22SQ	Ø1.2~1.3	025_SLD_F_TML_S	KH2000034-20	Tin
F	E	RD	C	B	RA	Wire Range	Insulation Range	Description	Part No.	Finish

TOLERANCES UNLESS OTHERWISE SPECIFIED		UNIT MM		THIRD ANGLE PROJECTION		DRWN JH. LEE		(주)우주일렉트로닉스 <b>UJU Electronics co.,Ltd.</b>	
0 ±		THIRD ANGLE PROJECTION		MATERIAL Copper Alloy		CHKD KH. PARK			
0.0 ±		PRODUCT SPEC		APPLICATION SPEC		APVD CY. CHOI		NAME 025_SLD_F_TML	
0.000 ±						FINISH/COLOR Tin		CUSTOMER	
0.000 ±						WEIGHT		DRAWING NO KH2000034	
ANGLES ±								DRAWING	
								RESTRICTED TO	
								SIZE A3	
								SCALE -	
								SHEET 1 of 1	
								REV A	