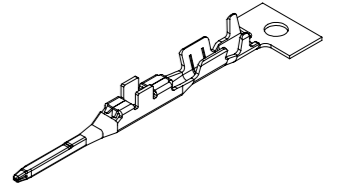
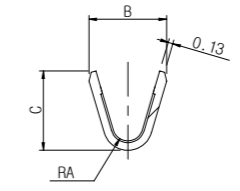
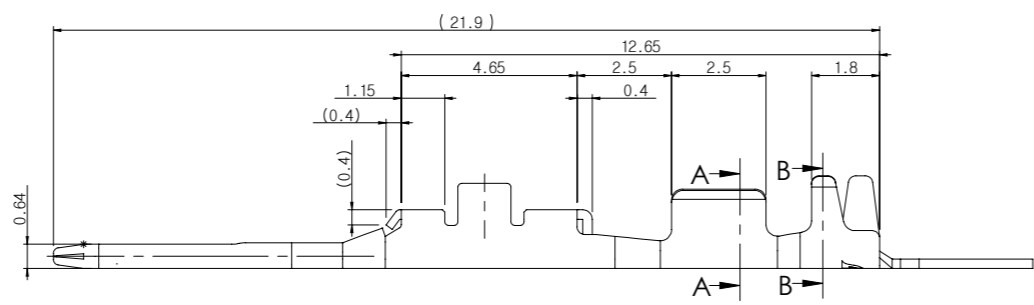
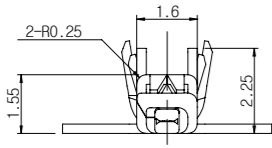


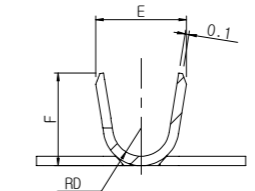
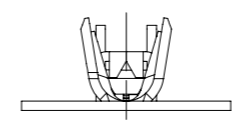
Unwinding direction off top of reel



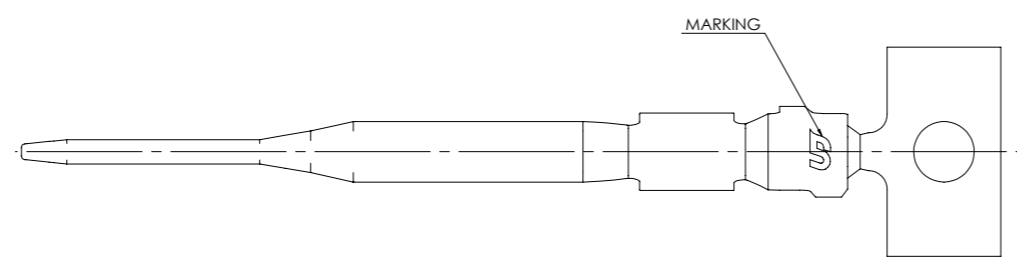
3D View



SECTION A-A



SECTION B-B



-Note-

1. Material : P26R-1/2H (T=0.25)
2. General Tolerance : see blow
3. Finish (Tin) : Pre-Tin 0.8~1.5µm over Copper 0.5µm Min.
4. Finish (Au) : Pre-Au 0.38µm Min. (Spot) Tin 2.0~4.0µm over Nickel 0.8~2.0µm
5. No burr permitted, round outer edge : R0.05 Max.
6. Remove Burrs, Break sharp edges
7. Camber 15mm/1000mm, Twist 90°/1000mm
8. No Crack
9. Barrel swage edges without burrs
10. Insertion force (Only first piece inspection) : 150~250gf

2.7	2.8	0.75	2.1	2.15	0.4	Φ1.4~1.7	0.3~0.5SQ	025 II TAP(M)	KH2000017-21	3
2.3	2.45	0.5	1.6	1.75	0.4	Φ1.0~1.05	0.22SQ	025 II TAP(S)	KH2000017-20	3
F	E	RD	C	B	RA	Insulation Range	Wire Range	Description	Part No.	Finish

GENERAL TOLERANCE									
	10MAX	30MAX	50MAX	70MAX	100MAX	120MAX	250MAX	250VR	ANGLE
A	±0.15	±0.2	±0.3	±0.4	±0.5	±0.75	±0.9	±1.4	±30'

1	RELEASED (RD-2021-097)	29 JUN'21	WJ	KH	CY
REV	REVISION RECORD	DATE	DRWN	CHKD	APVD

STOCK THK. 0.25 ±0.01 × 29.0 ±0.05 WIDE	WIRE RANGE SEE TABLE	CONTROL PRIORITY DIMENSION ■ CRITICAL □ MAJOR □ MINOR		DRWN WJ.CHO	CHKD KH. PARK	APVD CY. CHOI
TRIMMING BURR 0.03mm MAX.	Q'TY / REEL -	INSUL RANGE SEE TABLE	TOLERANCES UNLESS OTHERWISE SPECIFIED	MATERIAL SEE TABLE	UJU (주)우주 일렉트로닉스 UJU Electronics co.,Ltd.	
WIRE CRIMP SEE TABLE	INS CRIMP SEE TABLE	SURF AREA	UNIT MM	FINISH/COLOR SEE TABLE	NAME 025 II Male Terminal	
DIE FEED -	APPL FEED -		THIRD ANGLE PROJECTION	LOC A3	SCALE 5:1	SHEET 1 OF 1
WDW -	IDW -			DRAWING NO KH2000017	REV 3	