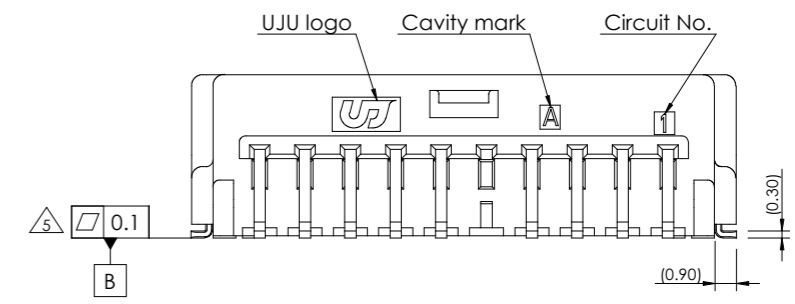
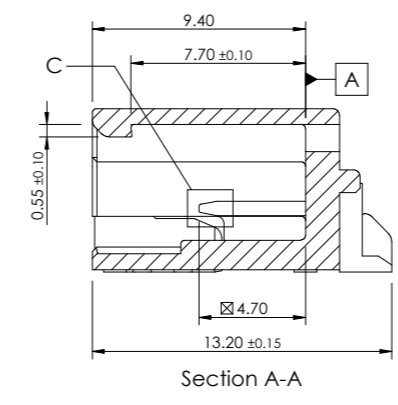
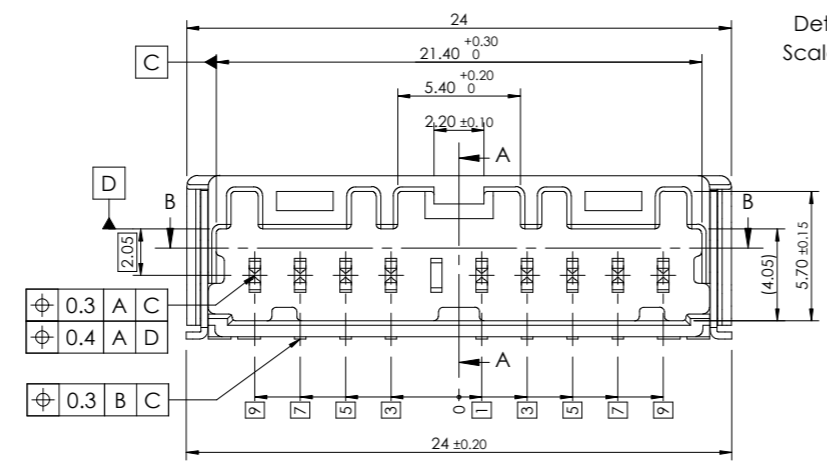
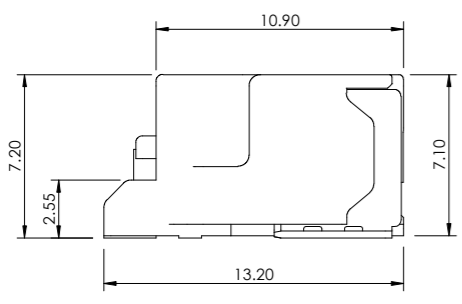
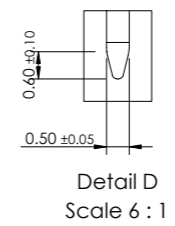
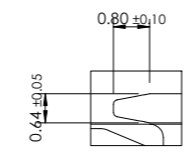
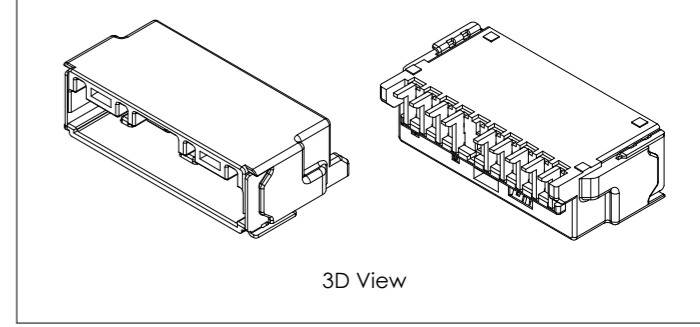
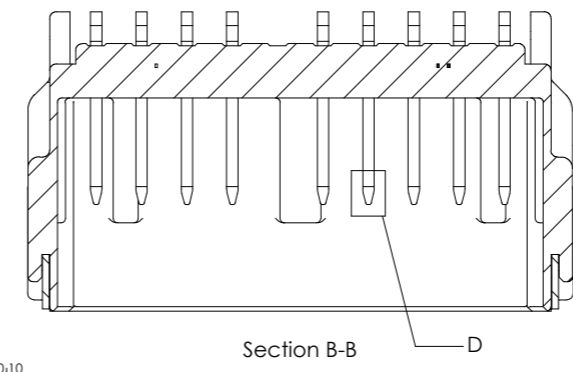
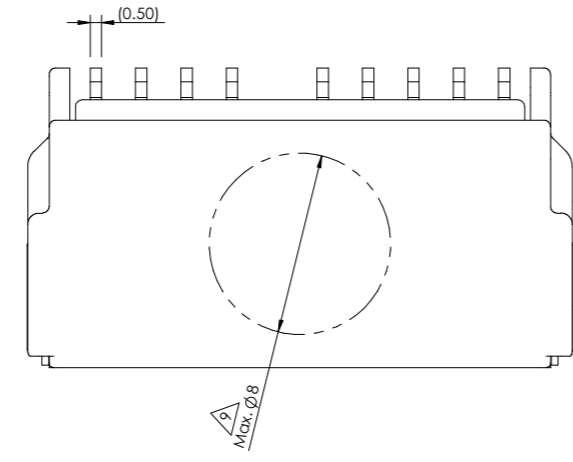
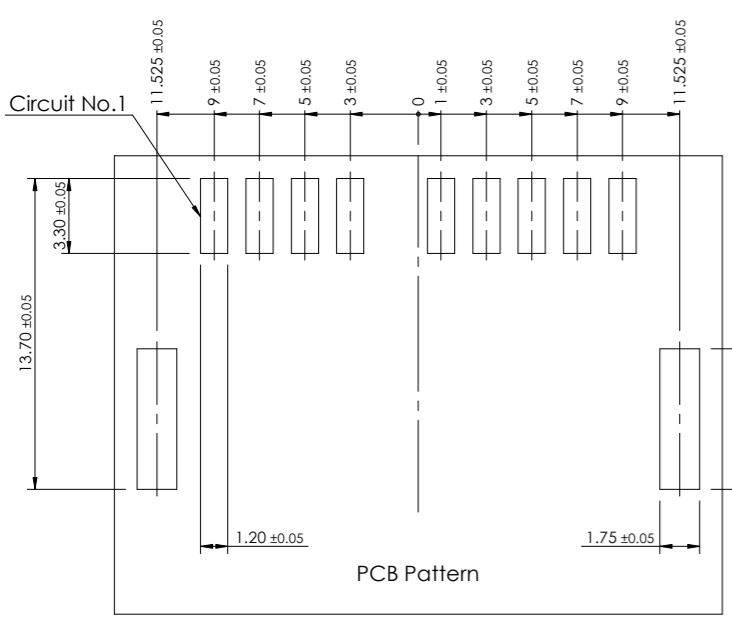
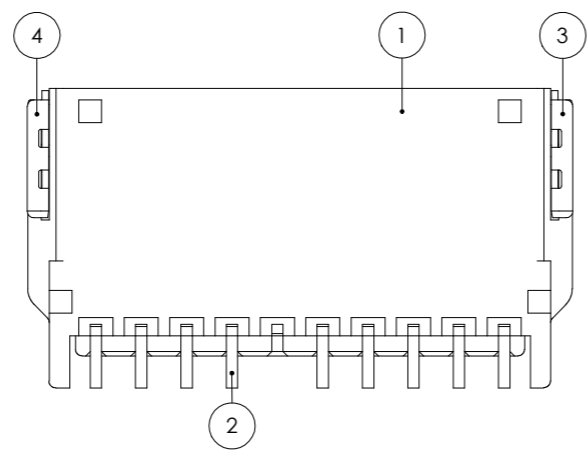
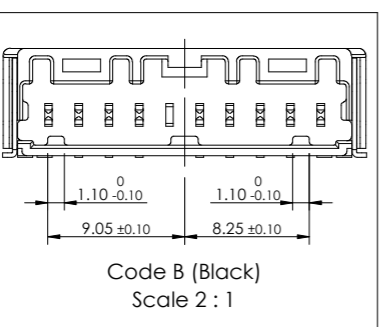
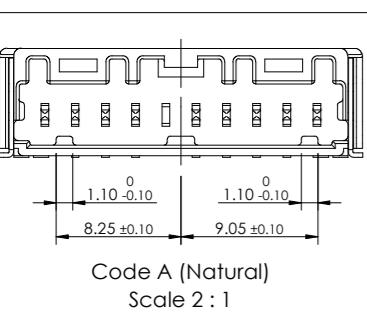


REV	REVISION RECORD	DATE	DRWN	CHKD	APVD
A	RELEASED (RD-2020-100)	08 JUL '20	JK	KH	CY
B	RELEASED (RD-2020-137)	20 OCT '20	JK	KH	CY



Code	Part No.	Description
D	-	020_D_C_SMT_9M_H_ASSY_BL_G
C	-	020_D_C_SMT_9M_H_ASSY_BR_G
B	KH1910041-21	020_D_C_SMT_9M_H_ASSY_BK_G
A	KH1910041-10	020_D_C_SMT_9M_H_ASSY_NR_G



- Note-
- General tolerance : Refer to DIN 16742 TG5 specification.
  - Burr Max.0.3
  - No crack
  - All letters shall be clear and legible.
  - Measuring the dimensions of Tab TML and Solder Peg.
  - Finish Tab TML and Solder Peg
    - Sn plating 2.5~4.0µm (matte) over Ni 1.0~2.0µm
  - Packing : Emboss tape
  - Flammability : UL94-HB
  - Vacuum grip area free of burr and factor pins, Max.Ø8.0
  - Matching part
    - KH1910023 (020\_D\_C\_9F\_ASSY\_G)

No.	Description	Material	Finish / Color	Q'ty
4	020 SMT Solder Peg HZT-L	Copper alloy	Post-Sn	1 1 1 1
3	020 SMT Solder Peg HZT-R	Copper alloy	Post-Sn	1 1 1 1
2	020 SMT Tab TML HZT	Copper alloy	Post-Sn	9 9 9 9
1	020_D_SMT_10M_H_HSG_BL	PA9T-GF30	Blue	1 - - -
	020_D_SMT_10M_H_HSG_BR	PA9T-GF30	Brown	- 1 - -
	020_D_SMT_10M_H_HSG_BK	PA9T-GF30	Black	- - 1 -
	020_D_SMT_10M_H_HSG_NR	PA9T-GF30	Natural	- - - 1

On request, development is scheduled.

On request, development is scheduled.

Code C (Brown) Scale 2:1

Code D (Blue) Scale 2:1

TOLERANCES UNLESS OTHERWISE SPECIFIED	UNIT MM
0 ±	THIRD ANGLE PROJECTION
0.0 ±	
0.00 ±	
0.000 ±	
0.0000 ±	
ANGLES ±	
PRODUCT SPEC	APPLICATION SPEC

DRWN JK. HWANG	NAME	
CHKD KH. PARK	020_D_C_SMT_9M_H_ASSY_G	
APVD CY. CHOI	MATERIAL	SEE TABLE
	FINISH/COLOR	SEE TABLE
	CUSTOMER DRAWING	KH1910041
	LOC RESTRICTED TO	SIZE SCALE SHEET
		A3 3:1 1 of 1
		REV B