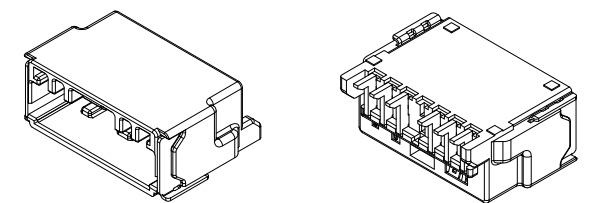
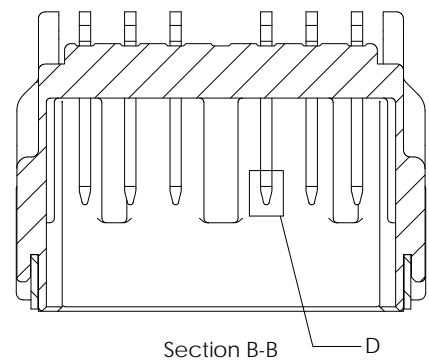
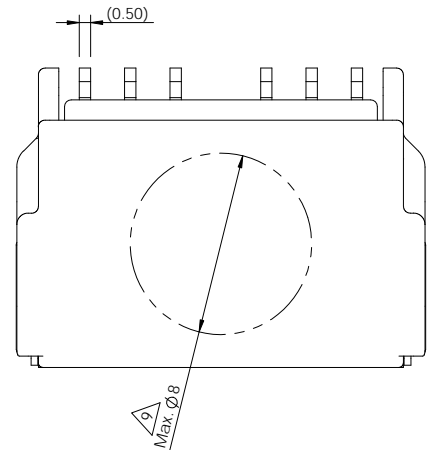
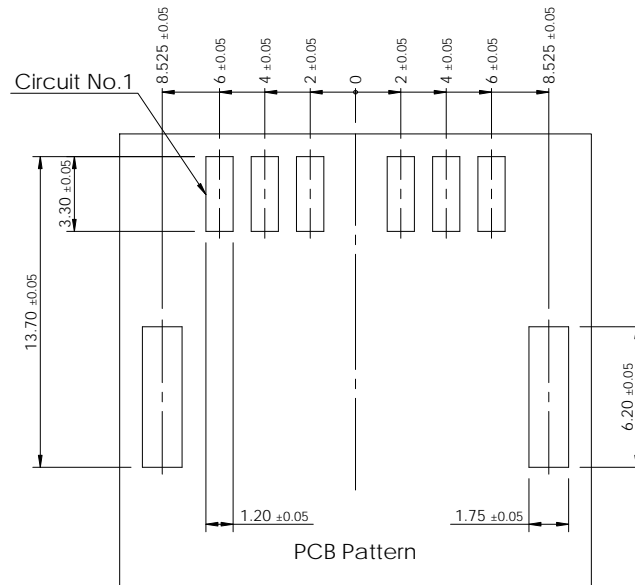
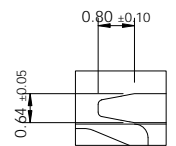


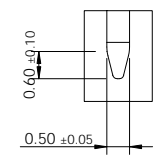
REV	REVISION RECORD	DATE	DRWN	CHKD	APVD
A	RELEASED (RD-2020-100)	08 JUL '20	JK	KH	CY
B	CHANGED (RD-2020-137)	20 OCT '20	JK	KH	CY
C	CHANGED (RD-2022-138)	07 NOV '22	JK	SJ	CY



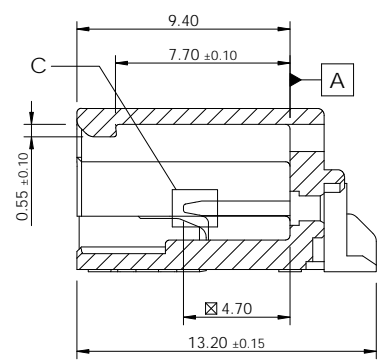
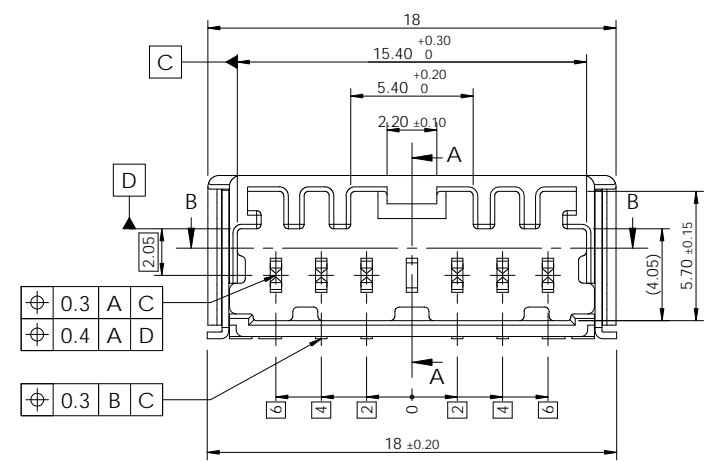
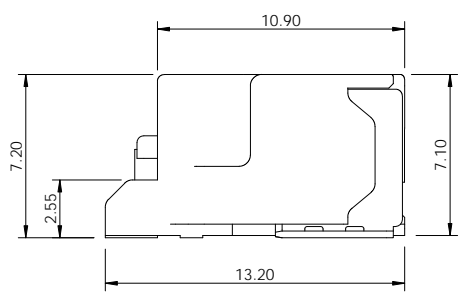
3D View



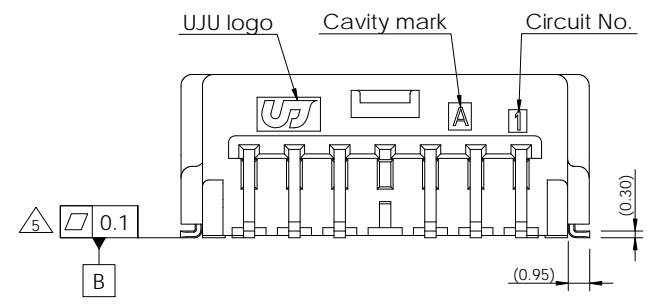
Detail C  
Scale 6 : 1



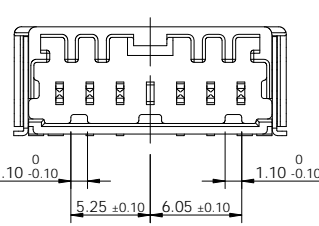
Detail D  
Scale 6 : 1



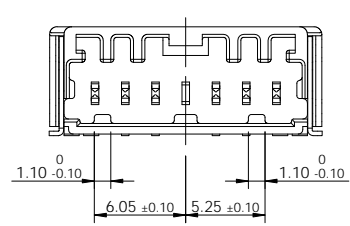
Section A-A



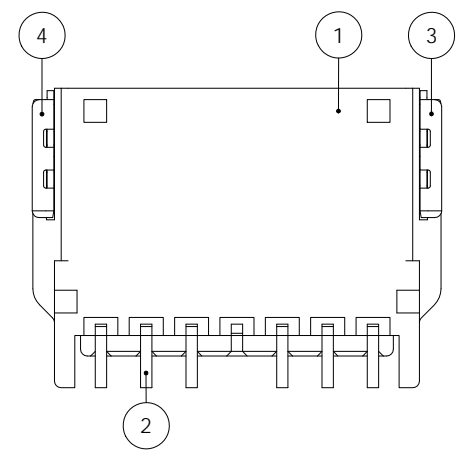
Code	Part No.	Description
D	KH1910039-83	020_D_C_SMT_6M_H_ASSY_BL_G
C	KH1910039-42	020_D_C_SMT_6M_H_ASSY_BR_G
B	KH1910039-21	020_D_C_SMT_6M_H_ASSY_BK_G
A	KH1910039-10	020_D_C_SMT_6M_H_ASSY_NR_G



Code A (Natural)  
Scale 2 : 1

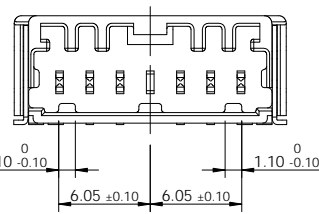


Code B (Black)  
Scale 2 : 1

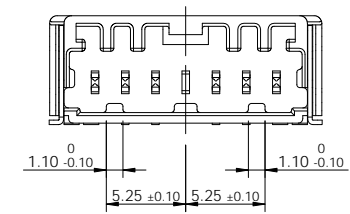


-Note-

- General tolerance : Refer to DIN 16742 TG5 specification.
- Burr Max.0.3
- No crack
- All letters shall be clear and legible.
- Measuring the dimensions of Tab TML and Solder Peg.
- Finish Tab TML and Solder Peg  
- Sn plating 2.5~4.0µm (matte) over Ni 1.0~2.0µm
- Packing : Emboss tape
- Flammability : UL94-HB
- Vacum grip area free of burr and factor pins, Max.Ø8.0
- Matching part  
- KH1910019 (020\_D\_C\_6F\_ASSY\_G)



Code C (Brown) ©  
Scale 2 : 1



Code D (Blue) ©  
Scale 2 : 1

No.	Description	Material	Finish / Color	Q'ty
4	020 SMT Solder Peg HZT-L	Copper alloy	Post-Sn	1 1 1 1
3	020 SMT Solder Peg HZT-R	Copper alloy	Post-Sn	1 1 1 1
2	020 SMT Tab TML HZT	Copper alloy	Post-Sn	6 6 6 6
1	020_D_SMT_7M_H_HSG_BL	PA9T-GF30	Blue	1 - - -
	020_D_SMT_7M_H_HSG_BR	PA9T-GF30	Brown	- 1 - -
	020_D_SMT_7M_H_HSG_BK	PA9T-GF30	Black	- - 1 -
	020_D_SMT_7M_H_HSG_NR	PA9T-GF30	Natural	- - - 1

TOLERANCES UNLESS OTHERWISE SPECIFIED	UNIT MM
0 ±	THD ANGLE PROJECTION
0.0 ±	ANGLES
0.00 ±	PRODUCT SPEC
0.000 ±	APPLICATION SPEC
0.0000 ±	
ANGLES	

DRWN JK. HWANG	CHKD SJ. LEE	APVD CY. CHOI	NAME <b>020_D_C_SMT_6M_H_ASSY_G</b>			
MATERIAL SEE TABLE			CUSTOMER DRAWING KH1910039			
FINISH/COLOR SEE TABLE			LOC	RESTRICTED TO	SIZE A3	SCALE 3:1
WEIGHT			SHEET 1 of 1	REV C		