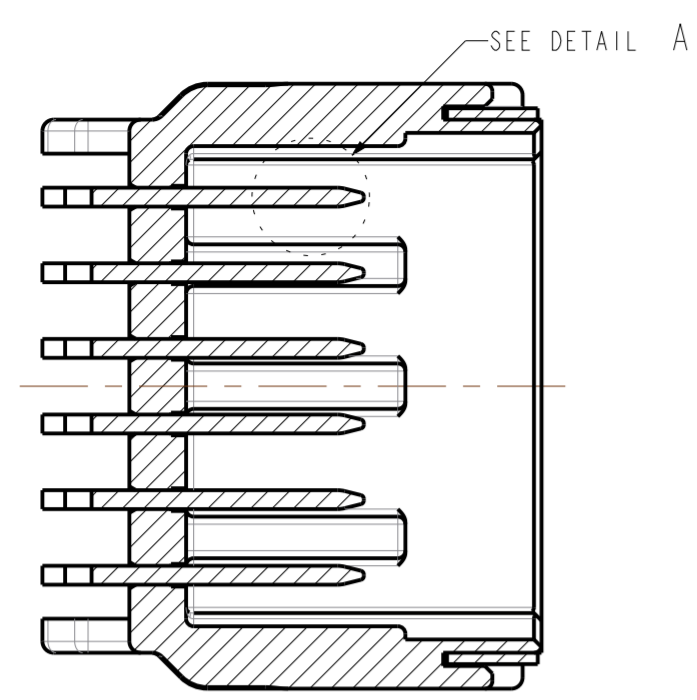
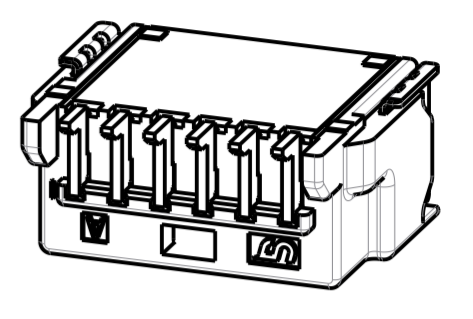
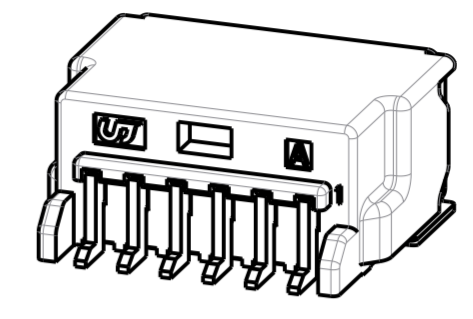
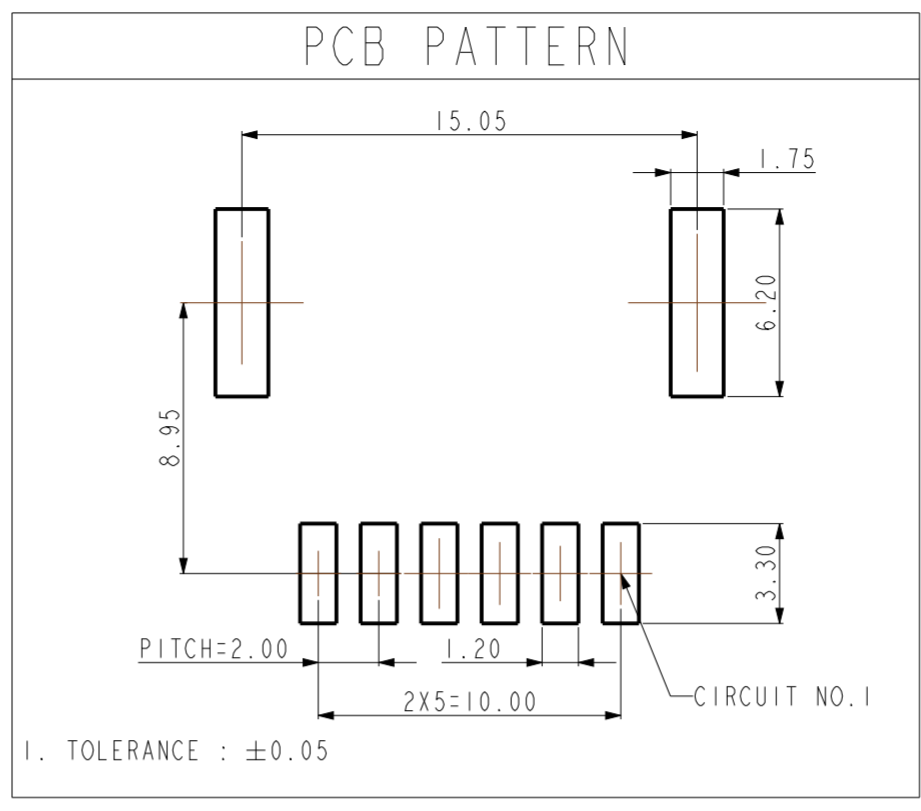
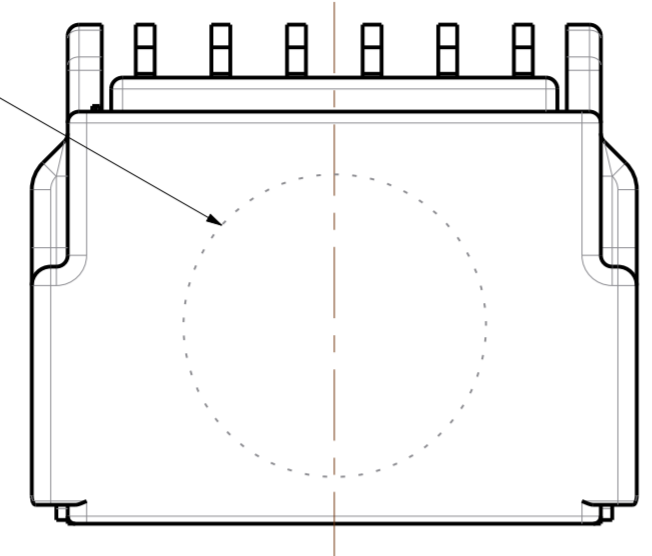


| REV | REVISION RECORD | DATE | DRWN | CHKD | APVD |
|-----|-----------------------|-----------|------|------|------|
| A | RELEASED | 21.JUN'19 | DR | KH | CY |
| B | REVISED (RD-2020-029) | 09.MAR'20 | DR | KH | CY |
| C | REVISED (RD-2020-140) | 23.OCT'20 | DR | KH | CY |

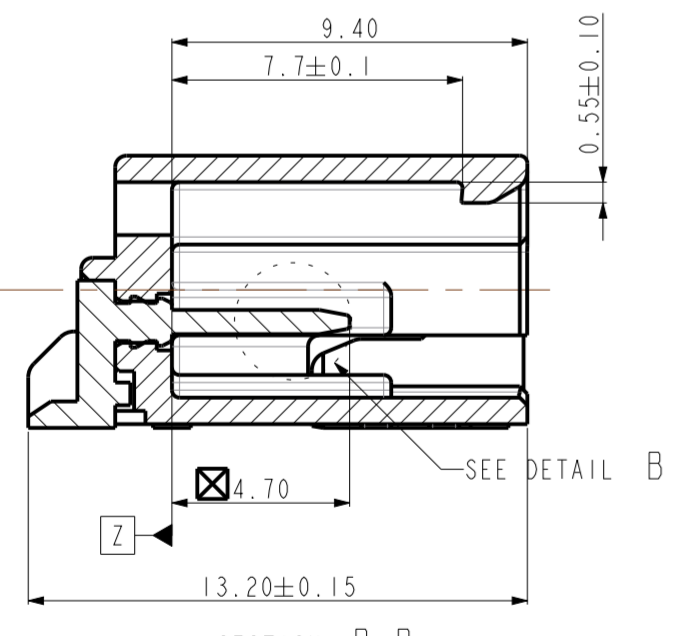
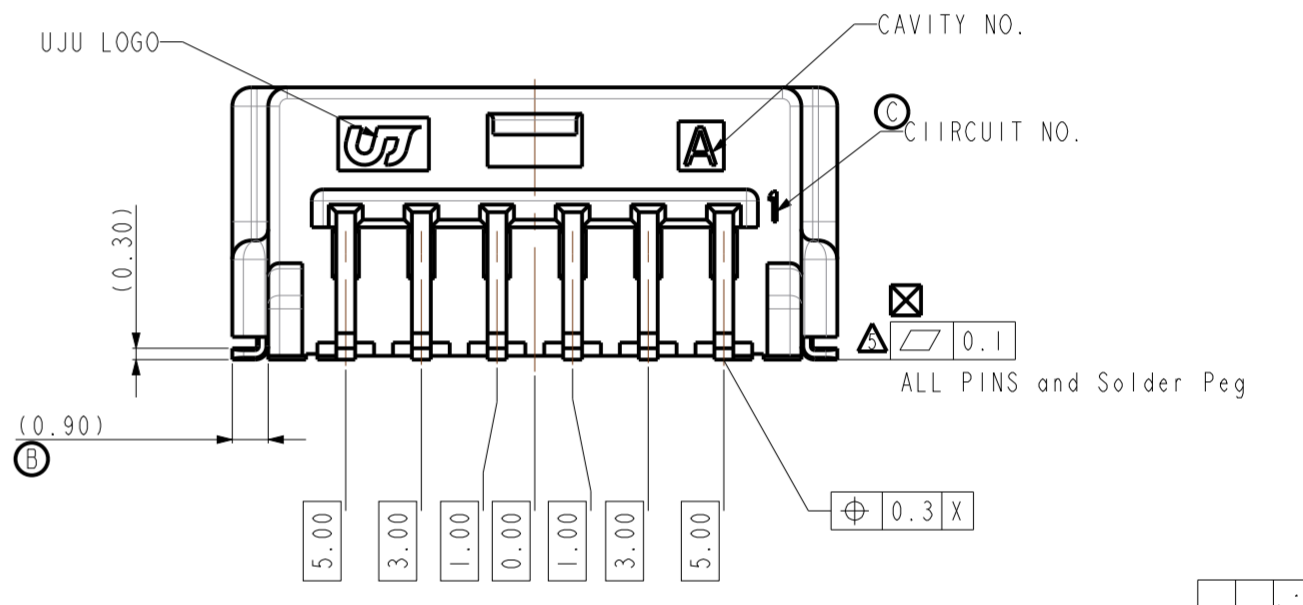
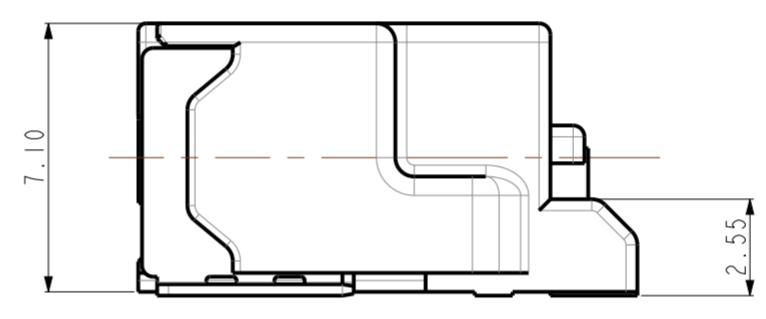
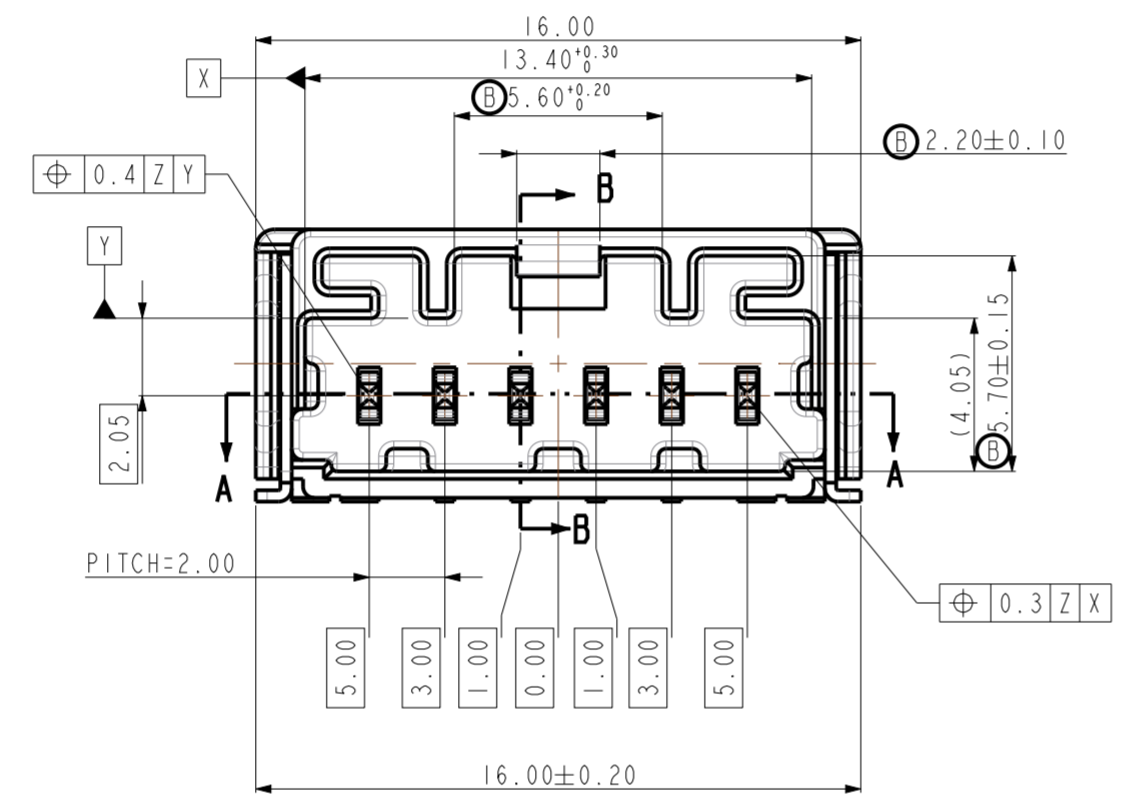
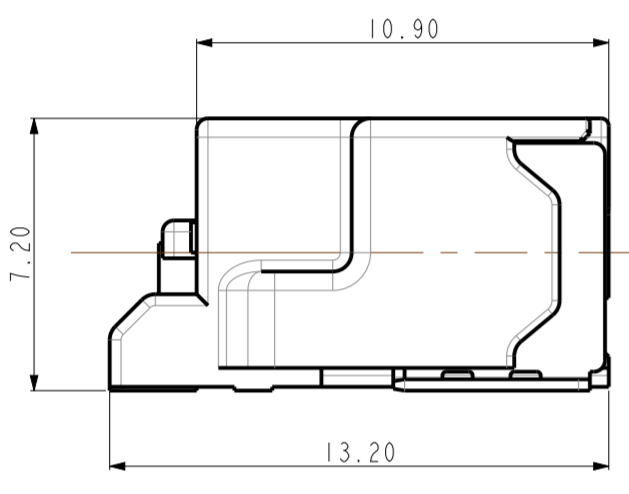


⊕Ⓢ
(MAX. Ø8.0)

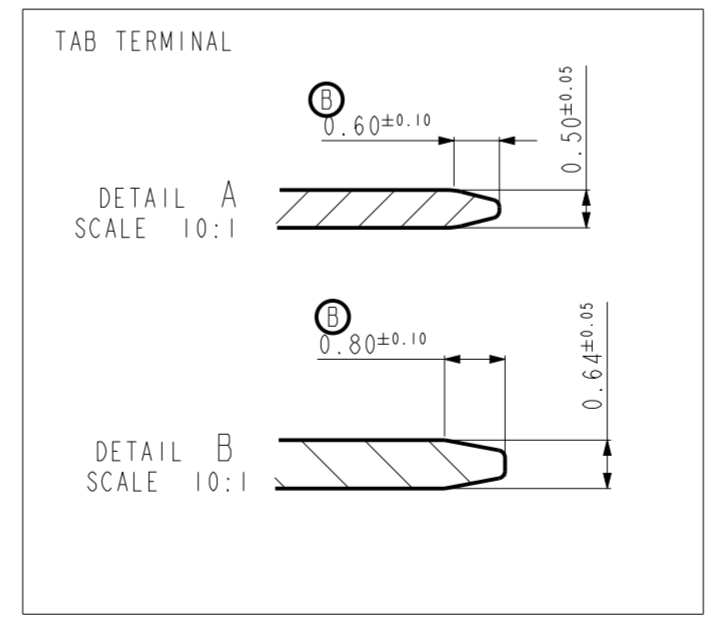
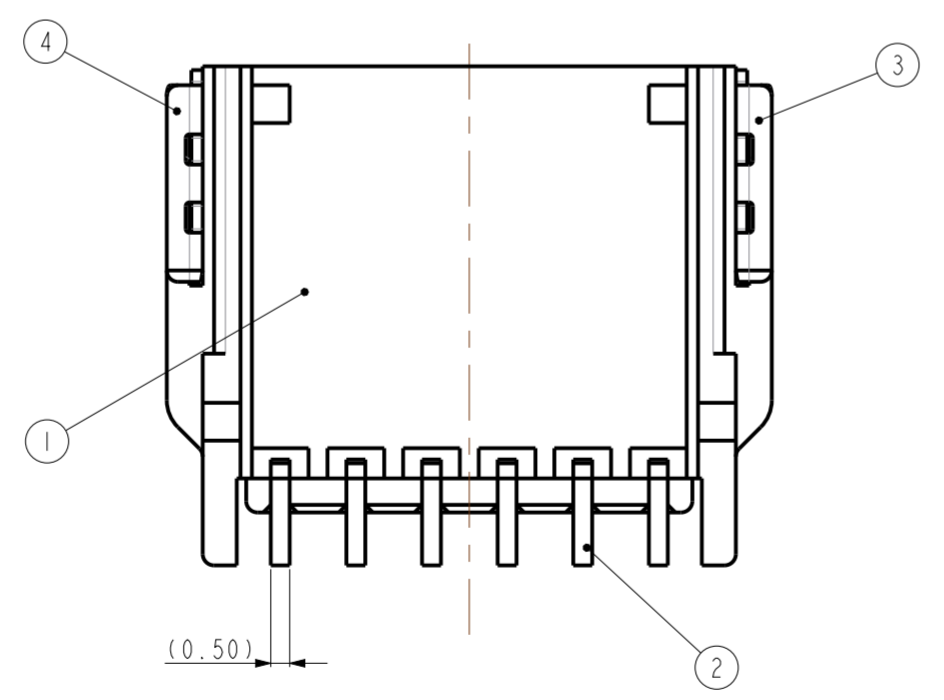


ISO VIEW

SECTION A-A



SECTION B-B

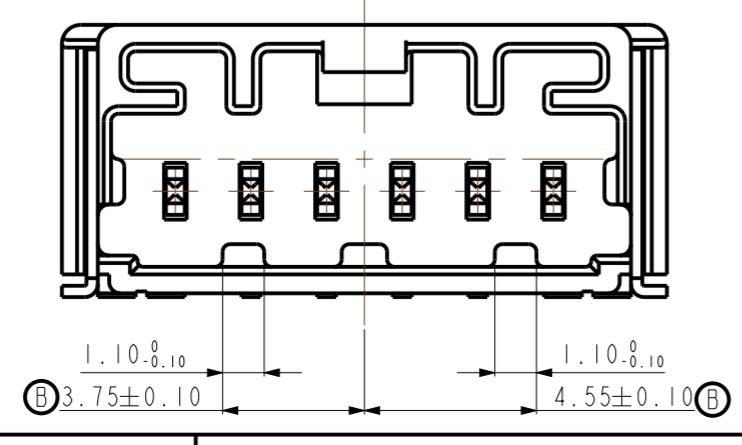
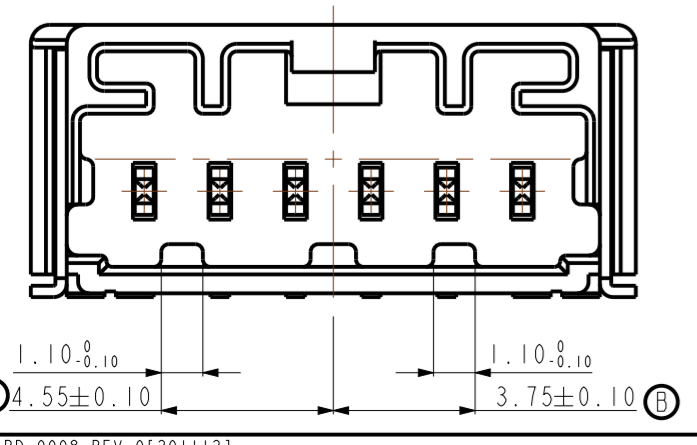


NOTE.

- GENERAL TOLERANCE : REFER TO DIN 16742 TG5 SPECIFICATION
- Ⓢ. BURR 0.3 MAX.
- NO CRACK
- ALL LETTERS SHALL BE CLEAR AND LEGIBLE
- ⚠ MEASURING THE DIMENSIONS OF TAB TML AND SOLDER PEG.
- FINISH TAB TML AND SOLDER PEG
TIN PLATING : 2.0~4.0um MATTE OVER NICKEL PLATING 0.8~2.0um MATTE
- PACKING : EMBOSS TAPE
- FLAMMABILITY : UL94 - HB
- Ⓢ⚠ VACUM GRIP AREA FREE OF BURR AND FACTOR PINS. MAX Ø8.0mm

CODE A (NATURAL)

CODE B (BLACK)



| NO | DESCRIPTION | MATERIAL | FINISH/COLOR | Q'TY |
|----|--------------------------------|-----------|--------------|------|
| ④ | 020 SMT SOLDER PEG-LEFT (H2T) | BRASS | POST-TIN | 1 |
| ③ | 020 SMT SOLDER PEG-RIGHT (H2T) | BRASS | POST-TIN | 1 |
| ② | 020 SMT TAB TML (H2T) | BRASS | POST-TIN | 6 |
| ① | 020_D_SMT_6M_H_HSG_BK | PA9T GF30 | BLACK | 1 |
| ① | 020_D_SMT_6M_H_HSG_NR | PA9T GF30 | NATURAL | 1 |

| | | | | | | | |
|--------------|-----------|--|-----------------------|------|-------|--------|-----|
| DRWN | DR KOO | (주)우주 일렉트로닉스 UJU Electronics co.,Ltd. | | | | | |
| CHKD | KH PARK | | | | | | |
| APVD | CY CHOI | NAME | 020_D_SMT_6M_H_ASSY_G | | | | |
| MATERIAL | SEE TABLE | CUSTOMER | DRAWING NO | | | | |
| FINISH/COLOR | SEE TABLE | DRAWING | KH1710116 | | | | |
| WEIGHT | - | LOC | RESTRICTED TO | SIZE | SCALE | SHEET | REV |
| PRODUCT SPEC | - | - | - | A2 | 5:1 | 1 OF 1 | C |

020_D_SMT_6M_H_ASSY_BK-G B KH1710116-21 C
 020_D_SMT_6M_H_ASSY_NR-G A KH1710116-10 C
 ASSY DESCRIPTION CODE ASSY PART NO. REV.