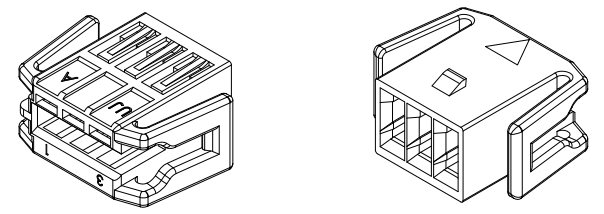
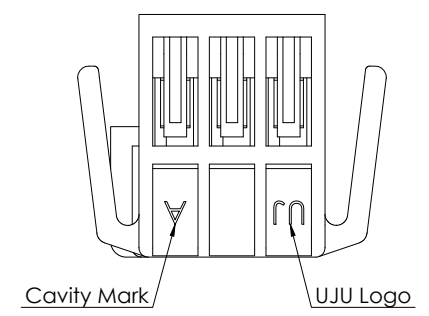
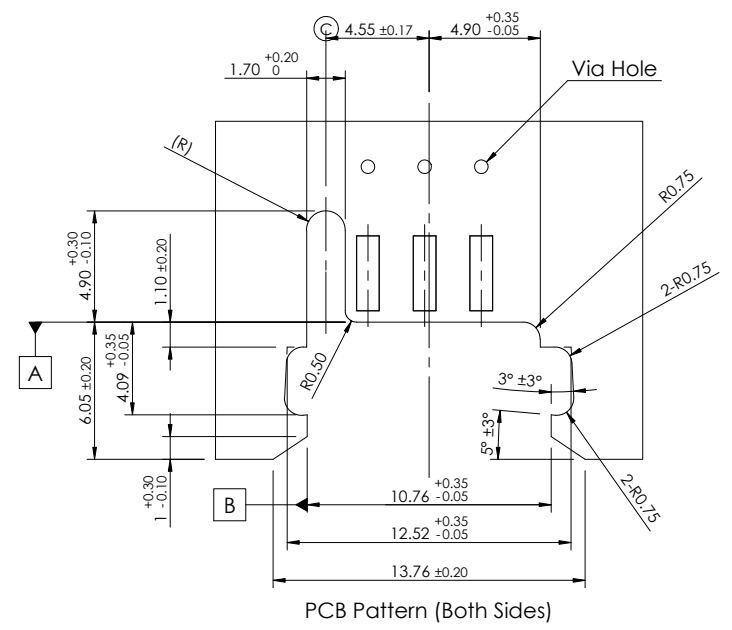
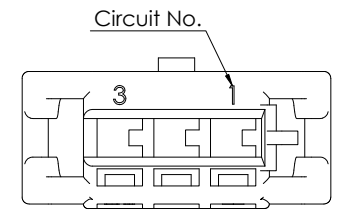
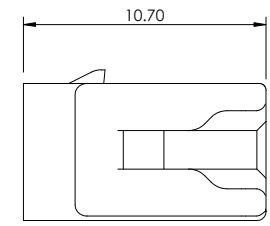
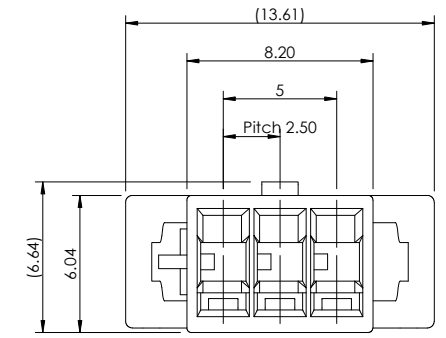
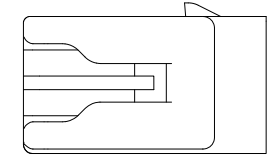
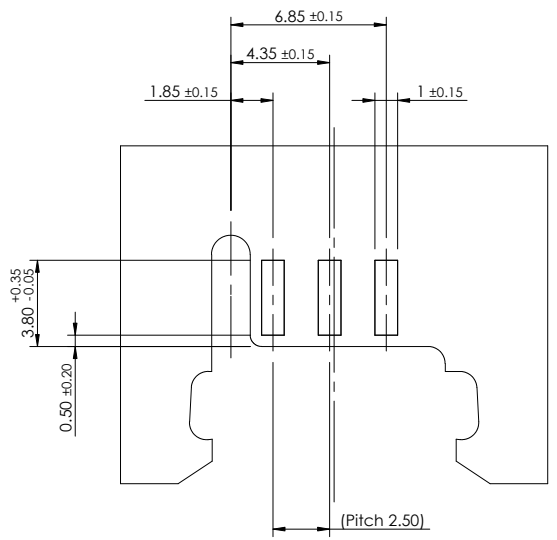
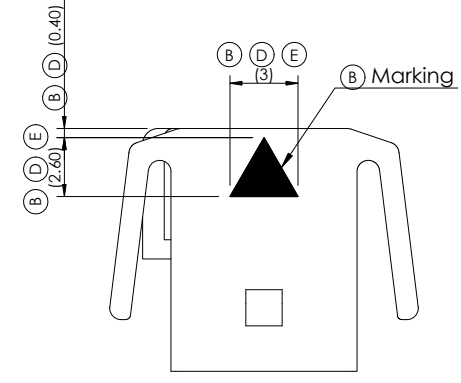
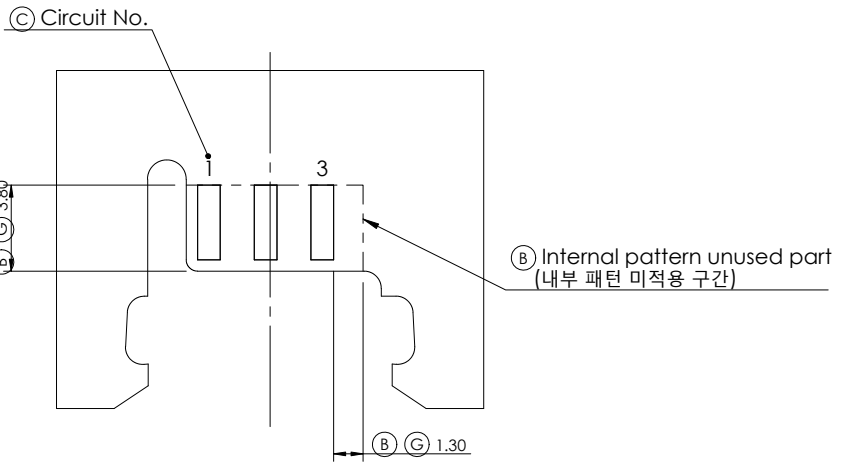


REV	REVISION RECORD	DATE	DRWN	CHKD	APVD
A	RELEASED	29 SEP '17	JK	CY	SJ
B	CHANGED	06 NOV '17	JK	CY	SJ
C	CHANGED	08 NOV '17	JK	CY	SJ
D	CHANGED	19 DEC '17	JK	CY	SJ
E	CHANGED	27 DEC '17	JK	CY	SJ
F	CHANGED	06 MAR '18	JK	SH	MJ
G	CHANGED (RD-2021-025)	25 FEB '21	JK	KH	CY



3D View



-NOTE 1. (Housing)-

1. General Tolerance : ±0.3
2. HSG Description : See TABLE 1.
3. Applicable Receptacle : See TABLE 2.
4. Optional Applicable T/CPA : See TABLE 3.(E)

TABLE 1.

PCB Slot 3F HSG	KH1600038-20	PA66-GF15	Black	White
	KH1600038-10		Natural	Black
Description	Part No.	Material	Finish / Color	Marking Color

TABLE 2.

PCB Slot Rec.	KH1600036-21	Copper Alloy	Pre-Tin	0.3 ~ 0.5
Description	Part No.	Material	Finish	Wire Size (mm)

TABLE 3.(E)

PCB Slot 3F T/CPA	KH1700027-70	PA66-GF15	Green
Description	Part No.	Material	Color

-NOTE 2. (PCB)-

1. Thickness : 1.60 ±0.16
2. Finish : Same as terminal plating  
Ex) Sn HASL→Sn, Au→Au
3. Recommendation : Apply a via hole for connect both sides.
4. Concrete specifications are discussed with UJU.

TOLERANCES UNLESS OTHERWISE SPECIFIED	UNIT MM
0 ±	THIRD ANGLE PROJECTION
0.0 ±	
0.00 ±	
0.000 ±	
0.0000 ±	
ANGLES ±	APPLICATION SPEC
PRODUCT SPEC	WEIGHT

DRWN JK. HWANG	 (주)우주일렉트로닉스 UJU Electronics co.,Ltd.	NAME					
CHKD KH. PARK		PCB Slot 3F HSG					
APVD CY. CHOI		CUSTOMER DRAWING	DRAWING NO				
MATERIAL	SEE TABLE	KH1600038					
FINISH/COLOR	SEE TABLE	LOC	RESTRICTED TO	SIZE	SCALE	SHEET	REV
				A3	3:1	1 of 1	G