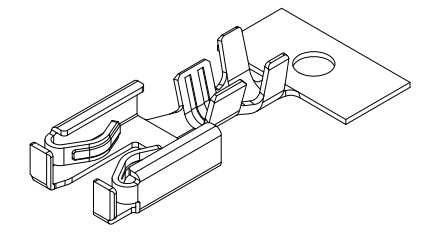
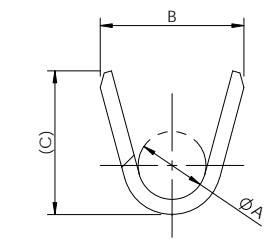
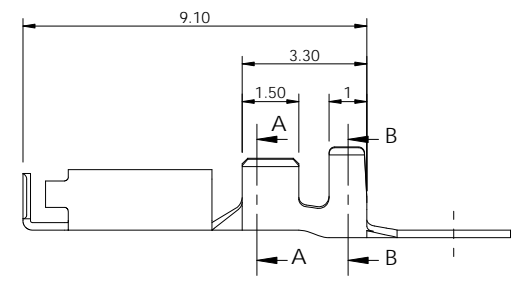
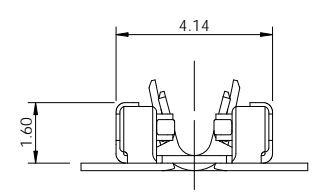
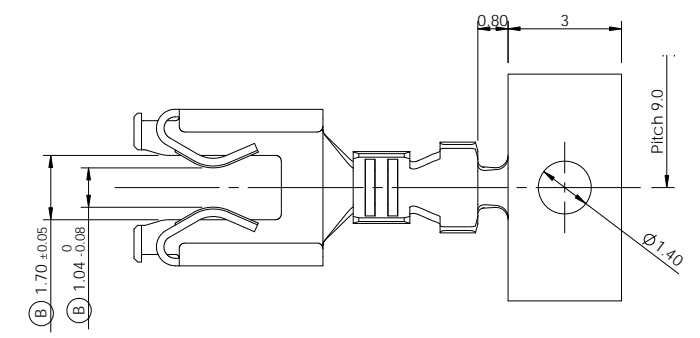


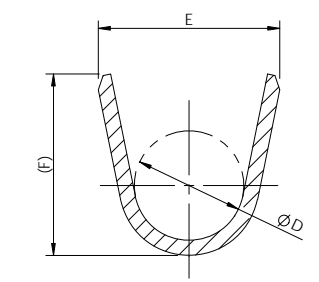
REV	REVISION RECORD	DATE	DRWN	CHKD	APVD
A	RELEASED	01 JUN '17	JK	CY	SJ
B	CHANGED	19 DEC '17	JK	CY	SJ
C	CHANGED	17 APR '19	JK	KH	CY
D	CHANGED (RD-2022-149)	07 DEC '22	JK	SJ	CY



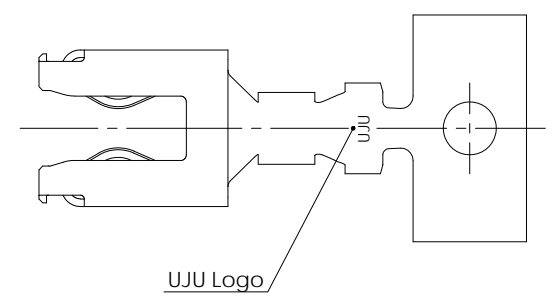
3D View



Section A-A
Scale 10 : 1



Section B-B
Scale 10 : 1



UJU Logo

-Note-

1. Material : Copper Alloy
2. General Tolerance : ±0.20, ±3°

(2.40)	2.40	Ø1.45	(1.90)	1.90	Ø0.90	Ø1.4 ~ Ø1.7 Ø1.2 ~ Ø1.5 Ø1.0 ~ Ø1.1	0.5SQ 0.3 ~ 0.35SQ ⓓ 0.22SQ	PCB Slot REC	KH1600036-31 KH1600036-21	Ⓒ Post-Au/Sn Pre-Sn
(F)	E	ØD	(C)	B	ØA	Insulation Range	Wire Range	Description	Part No.	Finish

TOLERANCES UNLESS OTHERWISE SPECIFIED 0 ± 0.0 ± 0.00 ± 0.000 ± 0.0000 ± ANGLES ±	UNIT	MM	DRWN	JK. HWANG	(주)우주 일렉트로닉스 UJU Electronics co.,Ltd.
	THD ANGLE PROJECTION		CHKD	SJ. LEE	
	PRODUCT SPEC	APPLICATION SPEC	APVD	CY. CHOI	
			MATERIAL	SEE TABLE	
		FINISH/COLOR	SEE TABLE	NAME	PCB Slot Female Terminal
		WEIGHT		CUSTOMER DRAWING	KH1600036
				LOC	RESTRICTED TO
				SIZE	A3
				SCALE	5:1
				SHEET	1 of 1
				REV	D