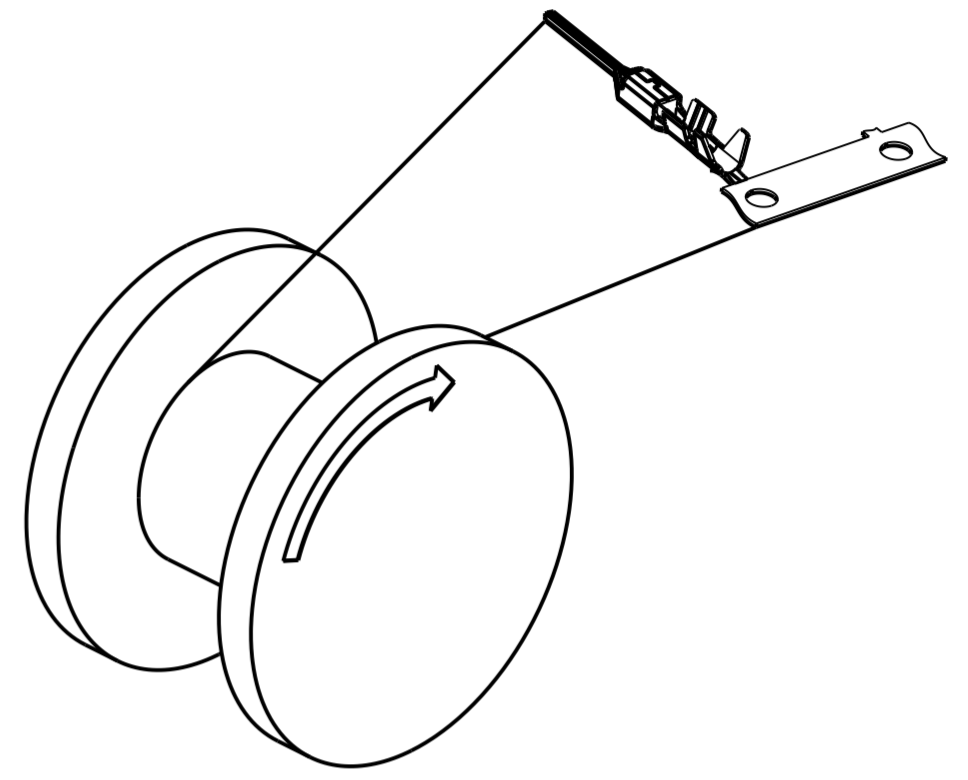
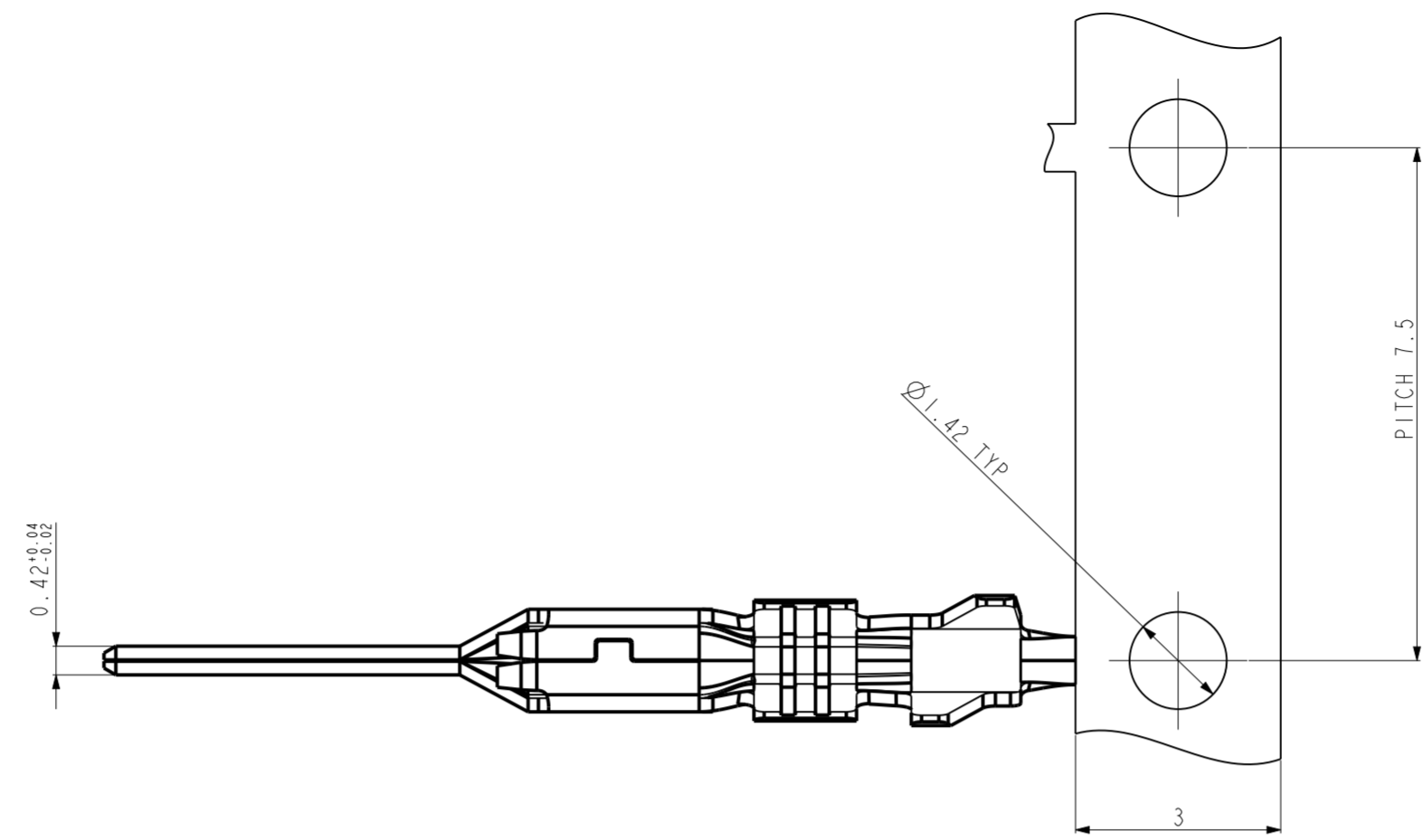
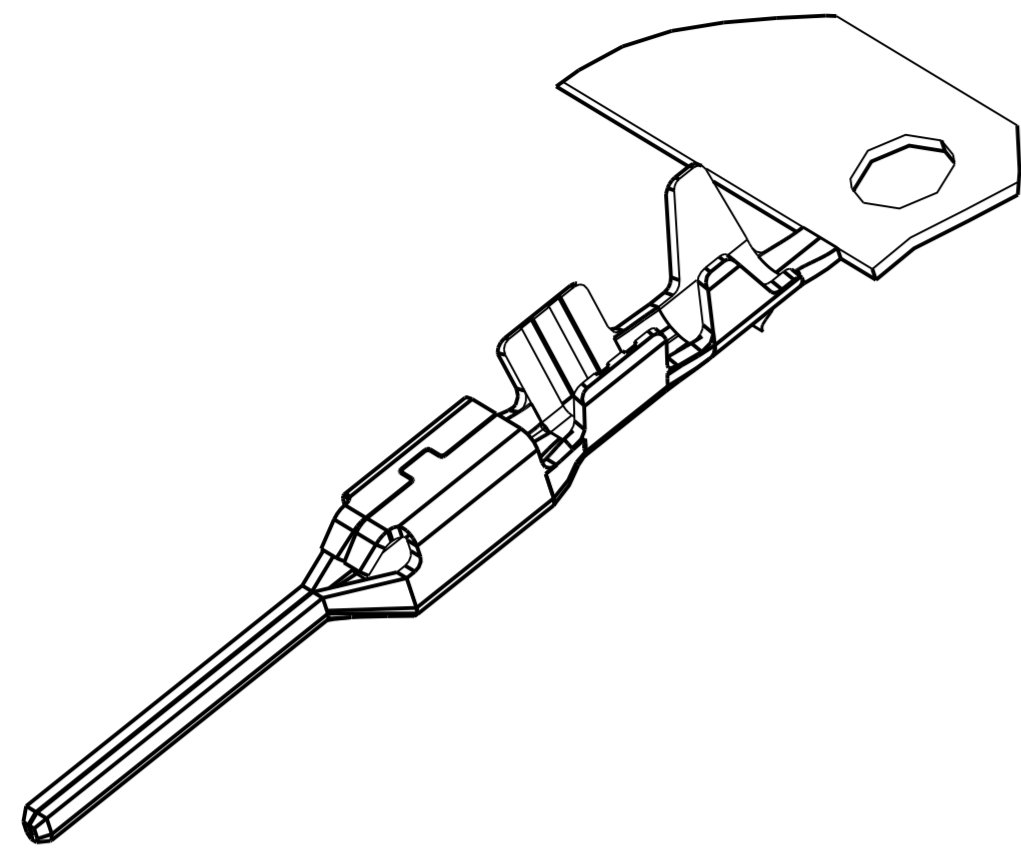
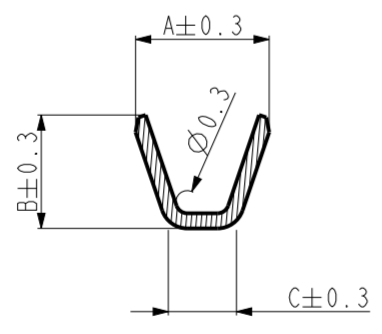
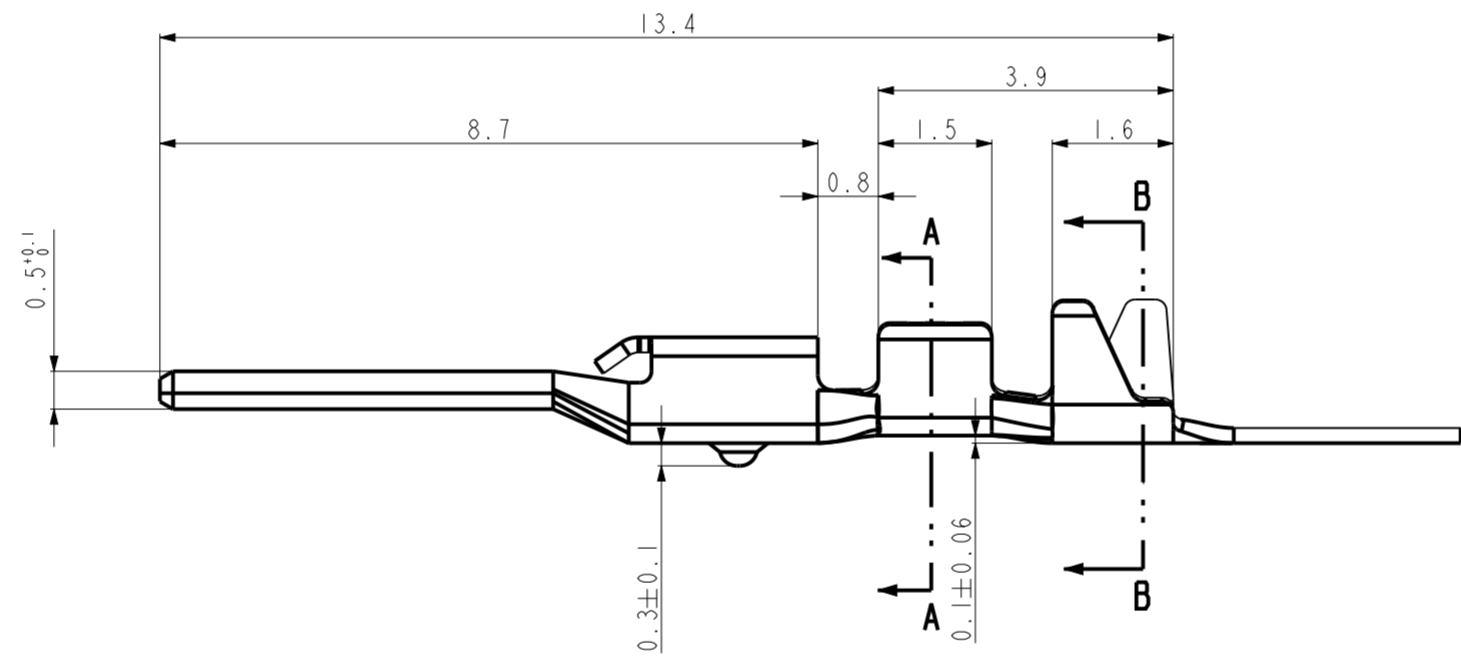
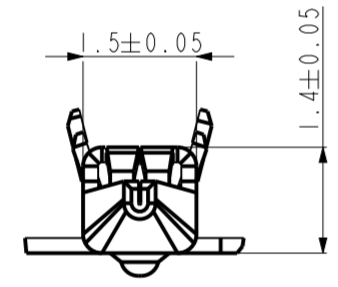


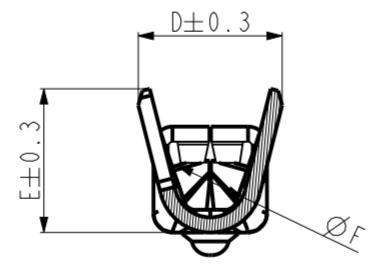
REV	REVISION RECORD	DATE	DRWN	CHKD	APVD
A	RELEASE	17JUL'18	SH		MJ
B	REVISED (RD-2020-086)	26JUN'20	JH (RYU)	KH	CY
C	REVISED (RD-2020-142)	23OCT'20	JH (LEE)	KH	CY



UNWINDING DIRECTION ON THE TOP OF REEL



SECTION A-A



SECTION B-B

- ① GENERAL TOLERANCE: ±0.2, ANGLE ±3°
- ② 0.8-1.5um TIN PLATED(REFLOW)
- ③ NO CABLE SEAL APPLICATIONS
USE WITH BLOCK SEAL FOR SEALED APPLICATIONS

REV	PART NO.	WIRE RANGE	INSULATION RANGE	A	B	C	D	E	F	STRIP LENGTH	CCW±0.05	CCH±0.03	ICW±0.1	ICH±0.1
C	KH1600060-21	0.3, 0.35	1.2 - 1.5	1.8	1.7	0.9	2.1	2.1	1.2	2.5±0.1	1.3	0.77	1.4	MAX. 1.4

UAD-RD-0008 REV.012011121

TOLERANCES UNLESS OTHERWISE SPECIFIED	UNIT MM
0 . 0	THIRD ANGLE PROJECTION
0 . 00	
0 . 000	PRODUCT SPEC
0 . 0000	APPLICATION SPEC
ANGLES	

DRWN	SH LEE	(주)우주 일렉트로닉스 UJU Electronics co.,Ltd.
CHKD	SH LEE	
APVD	MJ BANG	
NAME		020 CLEAN BODY MALE TERMINAL
MATERIAL		COPPER ALLOY
FINISH/COLOR		PRE-TIN
DRAWING NO		KH1600060
WEIGHT	0.058	LOC
RESTRICTED TO	SIZE	SCALE
	A2	10:1
SHEET	1 OF 1	REV
		C

D

C

B

A

4

3

2

1