

Camera Module Connector

Camera module for Automotive

VC1

Product Number Structure

I M 300 - L 04 T - N 339

① ② ③ ④ ⑤ ⑥ ⑦ ⑧

① Type of connectors : IN-OUTPUT

② Style : Male

③ Contact Pitch : 3.0mm

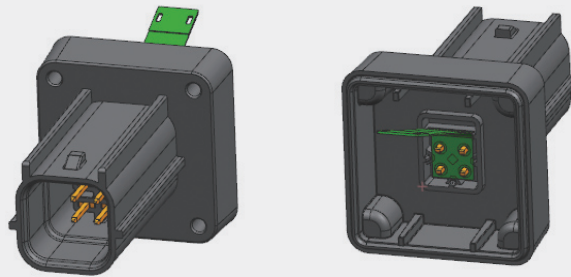
④ Type : Locking

⑤ No. of position : 4P

⑥ Test of on board : Through hole

⑦ Shape symbol : With Fitting

⑧ Connector Height : 33.9mm



- ▶ 3.0mm Pitch, 33.9mm Height
- ▶ Performance for automotive connector systems

Code & Specification

Mating Size / Unit : (mm)

Product Code	Pitch (mm)	No. of Contacts	Width (mm)	Height (mm)	Length	Remark
IM300-L04T-N339	3.00	4	23.40	33.90	23.40	Plug

Rated Current	Voltage Rating	Temperature Range
2.5A	12V AC, DC	-35°C ~ 85°C

Camera Module Connector

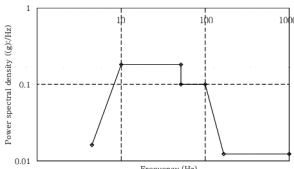
Camera module for Automotive

VC1

Product Specification

Ratings	Rated current	2.5A	Operating temperature range	-35°C to +85°C 1	Storage temperature range	+15°C to +35 °C
	Rated voltage	12V AC, DC	Operating humidity range	70%RH Max.2	Storage humidity range	65%RH

- Including terminal temperature rise.
- Storage area is to be free of corrosive gases and dew formation.

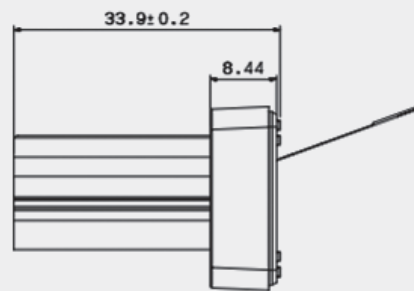
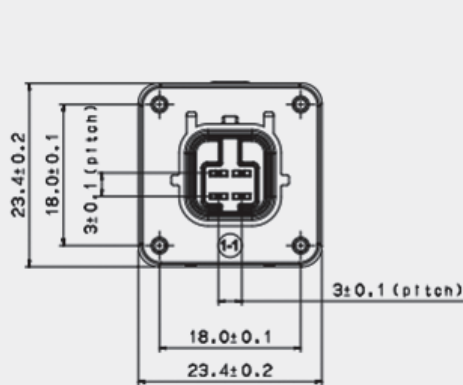
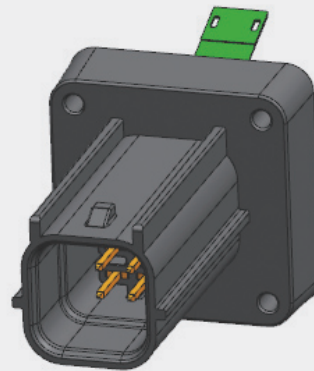
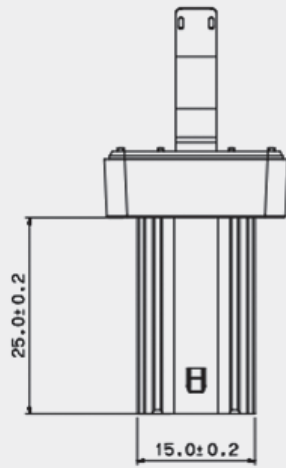
Items	Specifications	Conditions
1. Insulation resistance	100MΩ Min.	Test voltage : 500V D.C.
2. Withstanding voltage	No flashover or dielectric breakdown	AC 1,000V for 1minute
3. Insertion force	6Kgf Max.	FFC shall be insert at a speed of 25mm/min and measured the insertion force.
4. Short-circuit test	Temperature : 80°C contact force : initial pressure Min. 70 %	Connect the two adjacent terminals Times : 1sec, 5sec, 10sec, 50sec, 100sec Temperature : 80°C
5. Vibration	No microcracks Terminal surface SEM Micro-break detection ΔRc : Max 5mΩ (Voltage Drop Initial - Change after Test)	After leaving at 125°C for 48hr Temperature cyle : -40~90°C, 16h 2cycle RMS 5.1g, 100mA 
6. Water proofness	Leak Current Voltage withstand Insulation resistance Air tightness	Temperature : 23°C±5°C at 30min Test voltage : 100V D.C. at 1min

Materials / Finish

Part	Materials	Finish	UL Regulation
Base Insulation	PA66	Black Color	UL94V-0
Contact Terminal	Brass	Sn over Nickel	-

Camera Module Connector

Camera module for Automotive

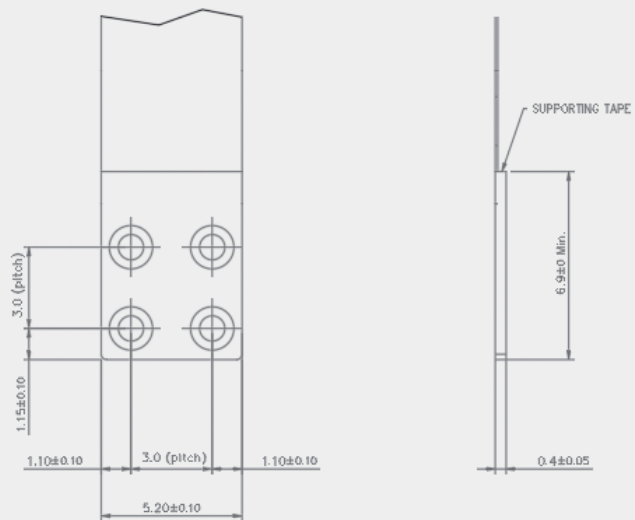


Camera Module Connector

Camera module for Automotive

VC1

Recommended FPC Dimensions



Packing Drawing

