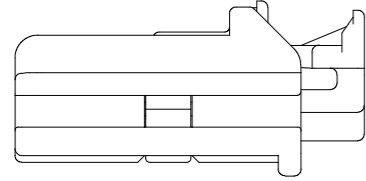
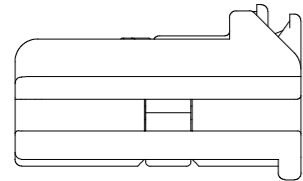


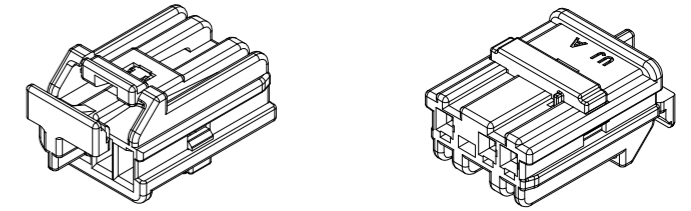
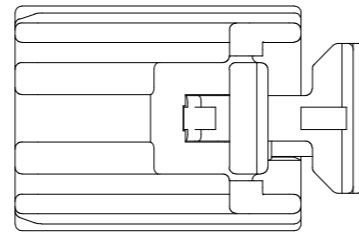
REV	REVISION RECORD	DATE	DRWN	CHKD	APVD
A	RELEASED (RD-2020-138)	20 OCT '20	JK	KH	CY
B	CHANGED (RD-2020-156)	18 NOV '20	JK	KH	CY
C	CHANGED (RD-2022-012)	26 JAN '22	JK	KH	CY



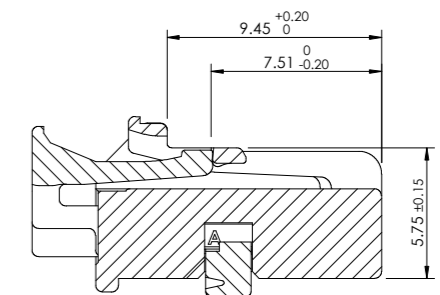
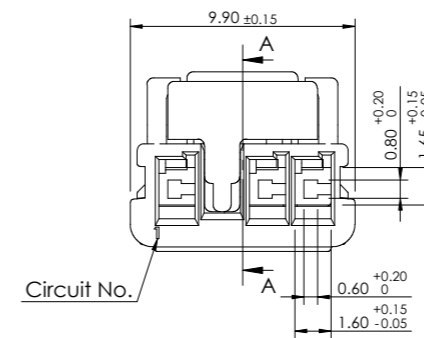
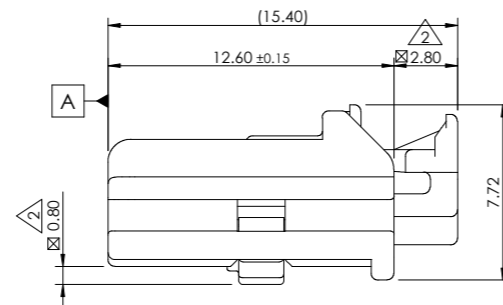
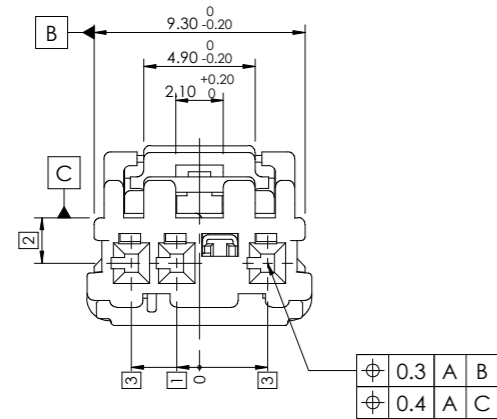
TPA 2nd. lock position



CPA 2nd. lock position



3D View

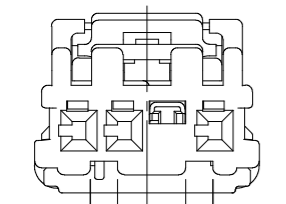
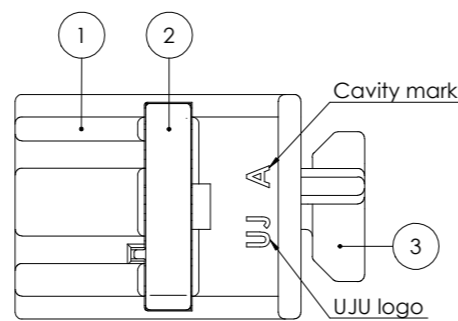


Section A-A

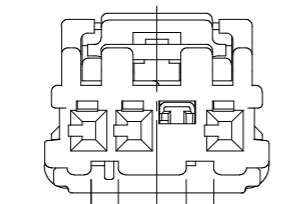
Code	Part No.	Description
D	KH1910012-83	020_D_C_3F_ASSY_BL_G
C	KH1910012-42	020_D_C_3F_ASSY_BR_G
B	KH1910012-21	020_D_C_3F_ASSY_BK_G
A	KH1910012-10	020_D_C_3F_ASSY_NR_G

-Note-

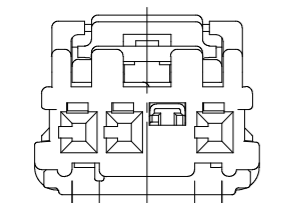
- General tolerance : Refer to DIN 16742 TG6 specification.
- Delivery condition : TPA/CPA 1st. lock position
- Burr Max.0.3
- No crack
- All letters shall be clear and legible.
- Packing : Tray
- Flammability : UL94-V0
- Applicable receptacle : KH1710007 (020_D_F_TML_G)
- Material : Copper alloy
- Wire size : 0.3mm ~ 0.5mm
- Matching part
- KH1910036 (020_D_C_SMT_3M_H_ASSY_G)
- KH1910057 (020_D_C_SMT_3M_V_ASSY_G)
- Avoid matching part
- KH1710114 (020_D_SMT_4M_H_ASSY_G)
- KH1810083 (020_D_SMT_4M_V_ASSY_G)



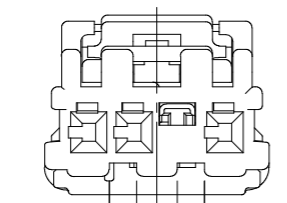
Code A (Natural)



Code B (Black)



Code C (Brown)



Code D (Blue)

No.	Description	Material	Finish / Color	Q'ty
3	020_D_C_3F_CPA_RE	PBT-GF30	Red	1 1 1 1
2	020_D_C_3F_TPA_GR	PBT-GF30	Gray	1 1 1 1
1	020_D_C_3F_HSG_BL	PBT-GF30	Blue	1 - - -
	020_D_C_3F_HSG_BR	PBT-GF30	Brown	- 1 - -
	020_D_C_3F_HSG_BK	PBT-GF30	Black	- - 1 -
	020_D_C_3F_HSG_NR	PBT-GF30	Natural	- - - 1

DRWN JK. HWANG
CHKD KH. PARK
APVD CY. CHOI

UJU Electronics co.,Ltd.

NAME 020_D_C_3F_ASSY_G

MATERIAL SEE TABLE
FINISH/COLOR SEE TABLE

CUSTOMER DRAWING KH1910012

LOC	RESTRICTED TO	SIZE A3	SCALE 3:1	SHEET 1 of 1	REV C
-----	---------------	---------	-----------	--------------	-------

TOLERANCES UNLESS OTHERWISE SPECIFIED	UNIT MM
0 ±	THIRD ANGLE PROJECTION
0.0 ±	ANGLES ±
0.00 ±	PRODUCT SPEC
0.000 ±	APPLICATION SPEC
0.0000 ±	